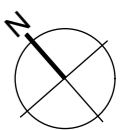
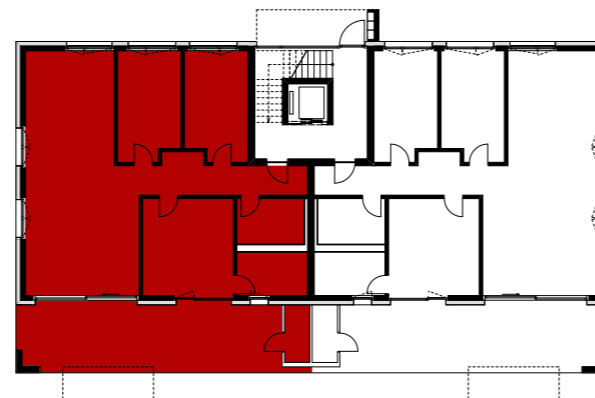
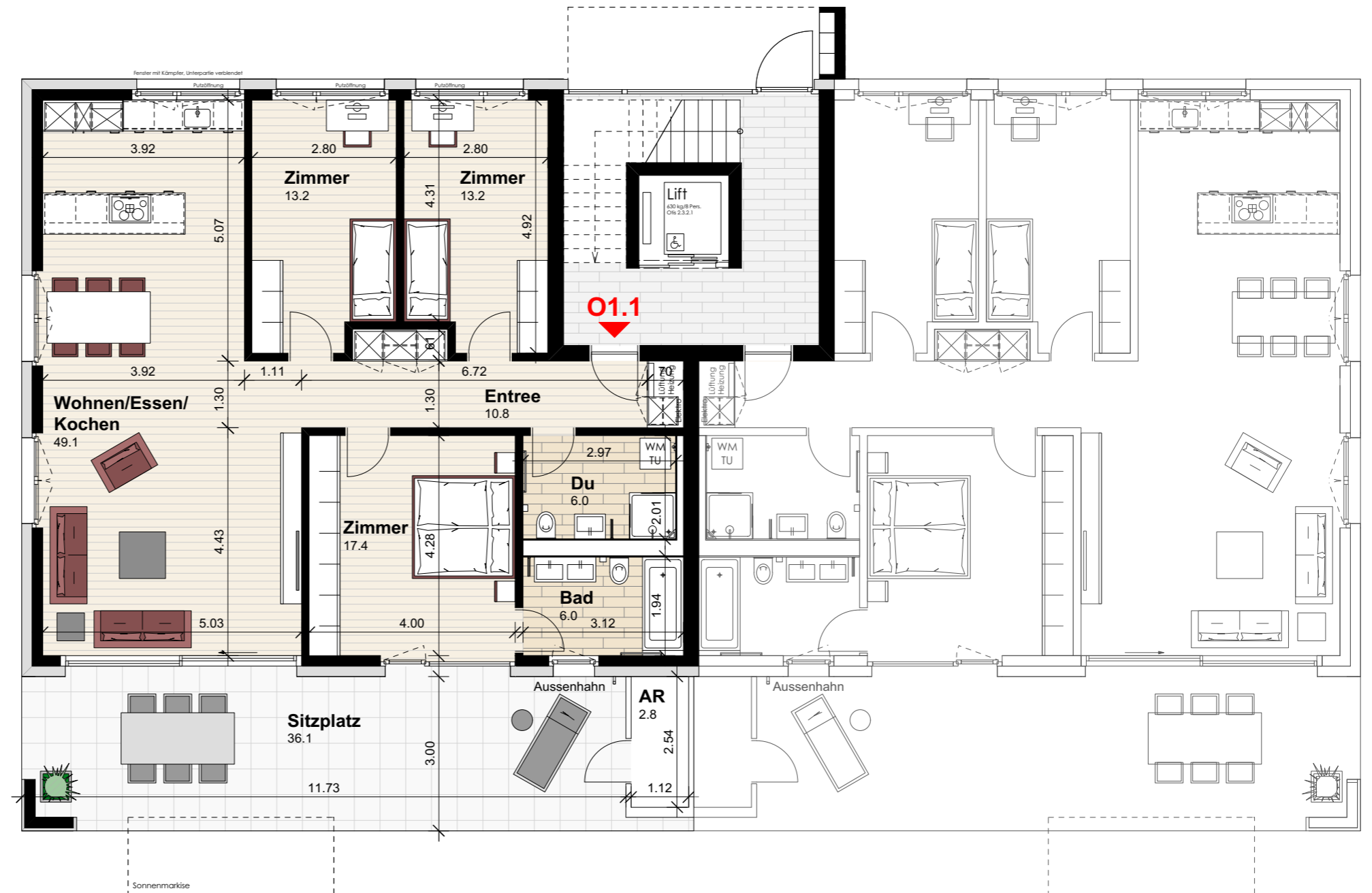


Wohnung O1.1 (Erdgeschoss)

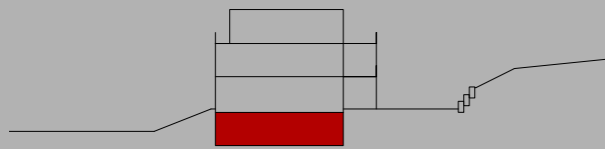
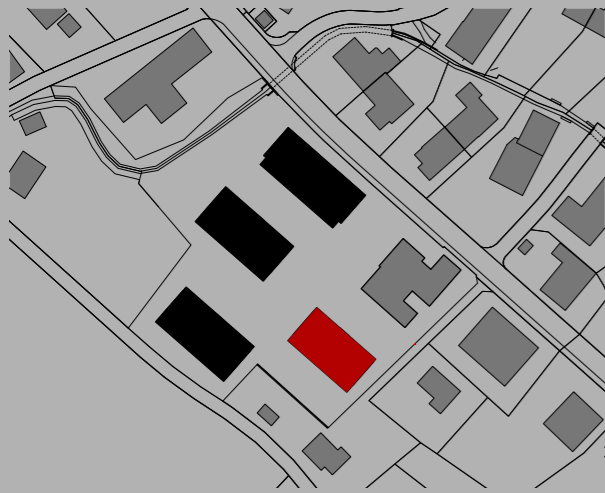
Anzahl Zimmer	4.5
Wohnfläche (brutto)	121.90 m ²
Wohnfläche (netto)	115.70 m ²
Aussenbereich	36.10 m ²
Keller	10.20 m ²



Mst. 1:100 (1cm = 1m)

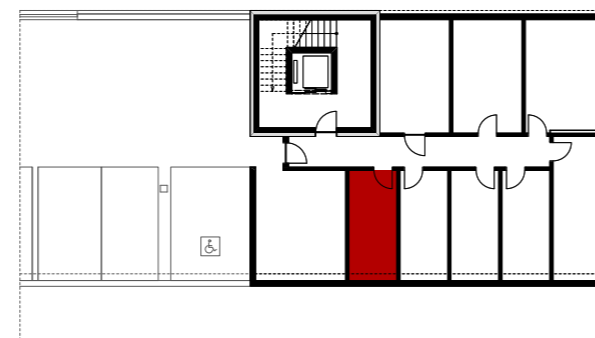
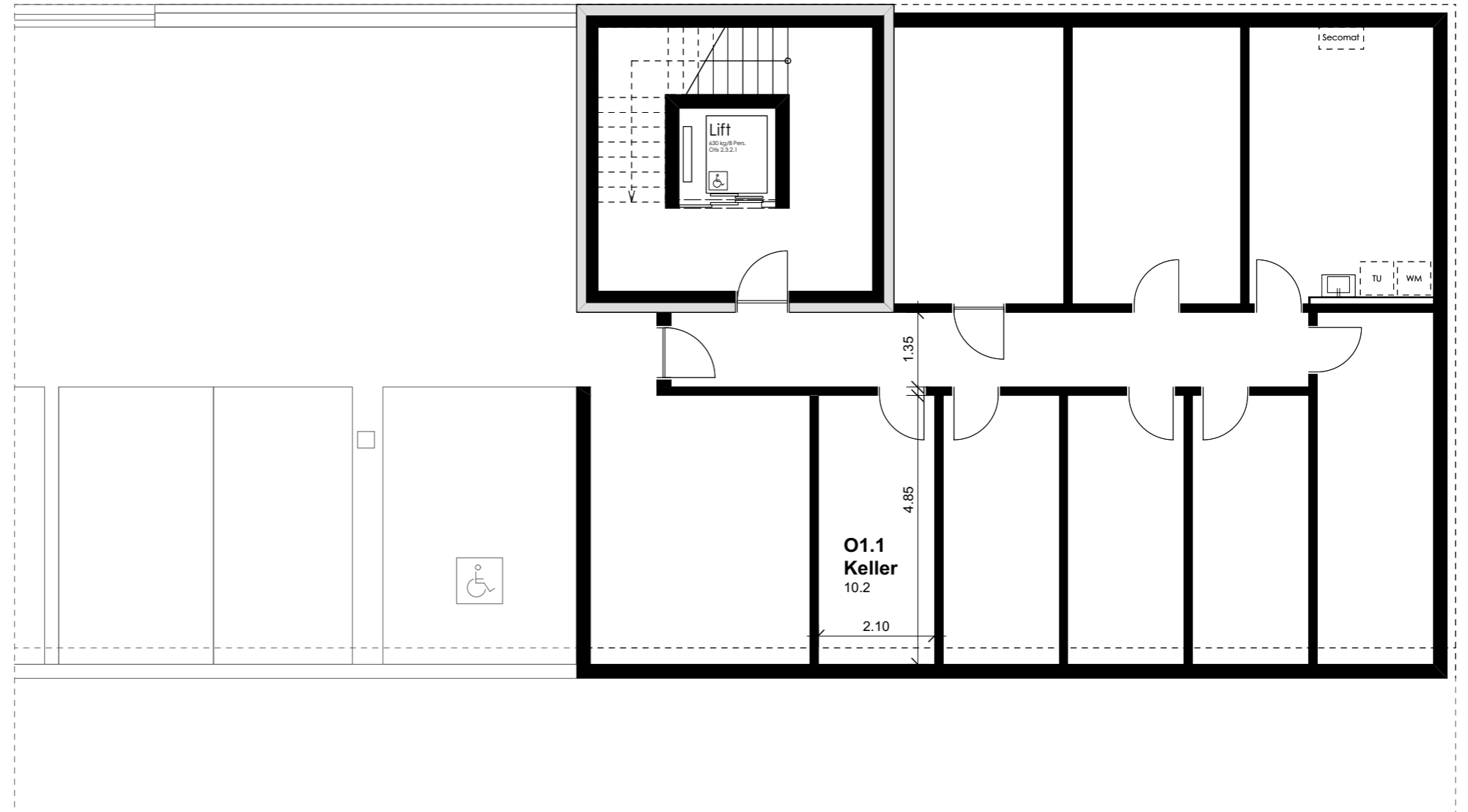
THOMA[®]
IMMOBILIEN TREUHAND

Beratung + Verkauf
THOMA Immobilien Treuhand AG
Bahnhofstrasse 13A
8580 Amriswil
Tel. 071 414 50 60
infotg@thoma-immo.ch
www.thoma-immo.ch



Wohnung O1.1 (Erdgeschoss)

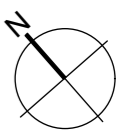
Anzahl Zimmer	4.5
Wohnfläche (brutto)	121.90 m ²
Wohnfläche (netto)	115.70 m ²
Aussenbereich	36.10 m ²
Keller	10.20 m ²



THOMA[®]
IMMOBILIEN TREUHAND

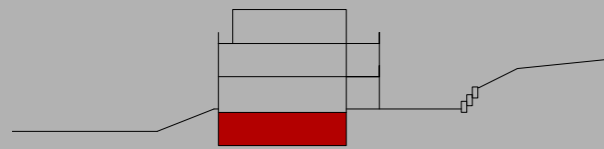
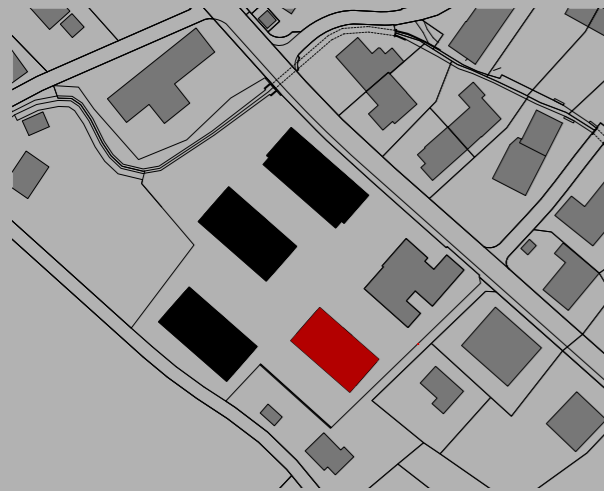
Beratung + Verkauf
THOMA Immobilien Treuhand AG
Bahnhofstrasse 13A
8580 Amriswil
Tel. 071 414 50 60
infotg@thoma-immo.ch
www.thoma-immo.ch

20. April 2018



0 1 2 3 4 5m

Mst. 1:100 (1cm = 1m)



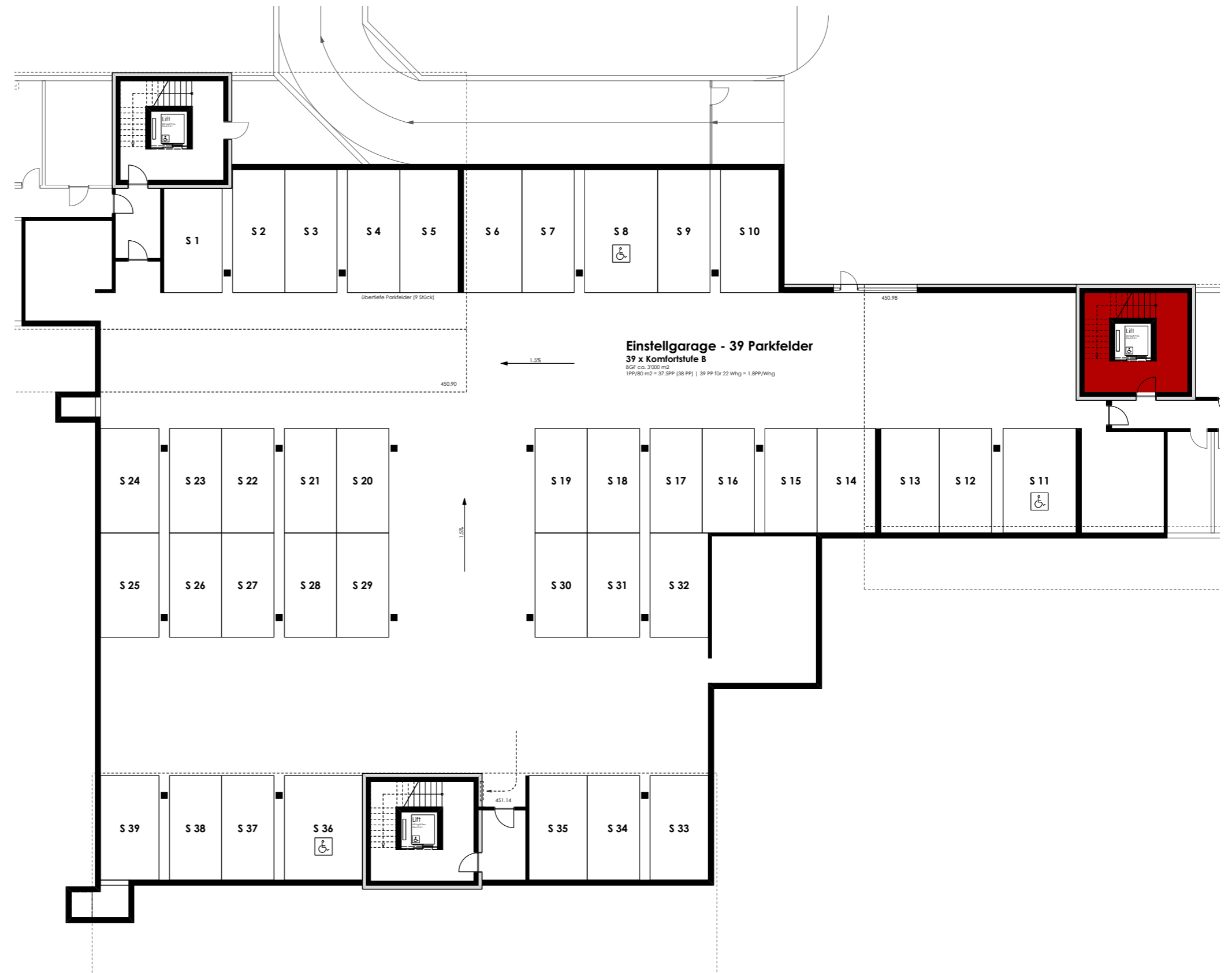
Wohnung O1.1 (Erdgeschoss)

Anzahl Zimmer	4.5
Wohnfläche (brutto)	121.90 m ²
Wohnfläche (netto)	115.70 m ²
Aussenbereich	36.10 m ²
Keller	10.20 m ²

THOMA[®]
IMMOBILIEN TREUHAND

Beratung + Verkauf
THOMA Immobilien Treuhand AG
Bahnhofstrasse 13A
8580 Amriswil
Tel. 071 414 50 60
infotg@thoma-immo.ch
www.thoma-immo.ch

20. April 2018



0 1 2 3 4 5m
Massstab unbestimmt