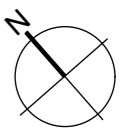
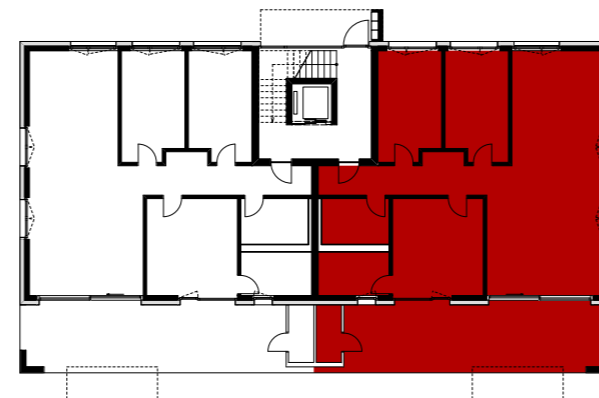
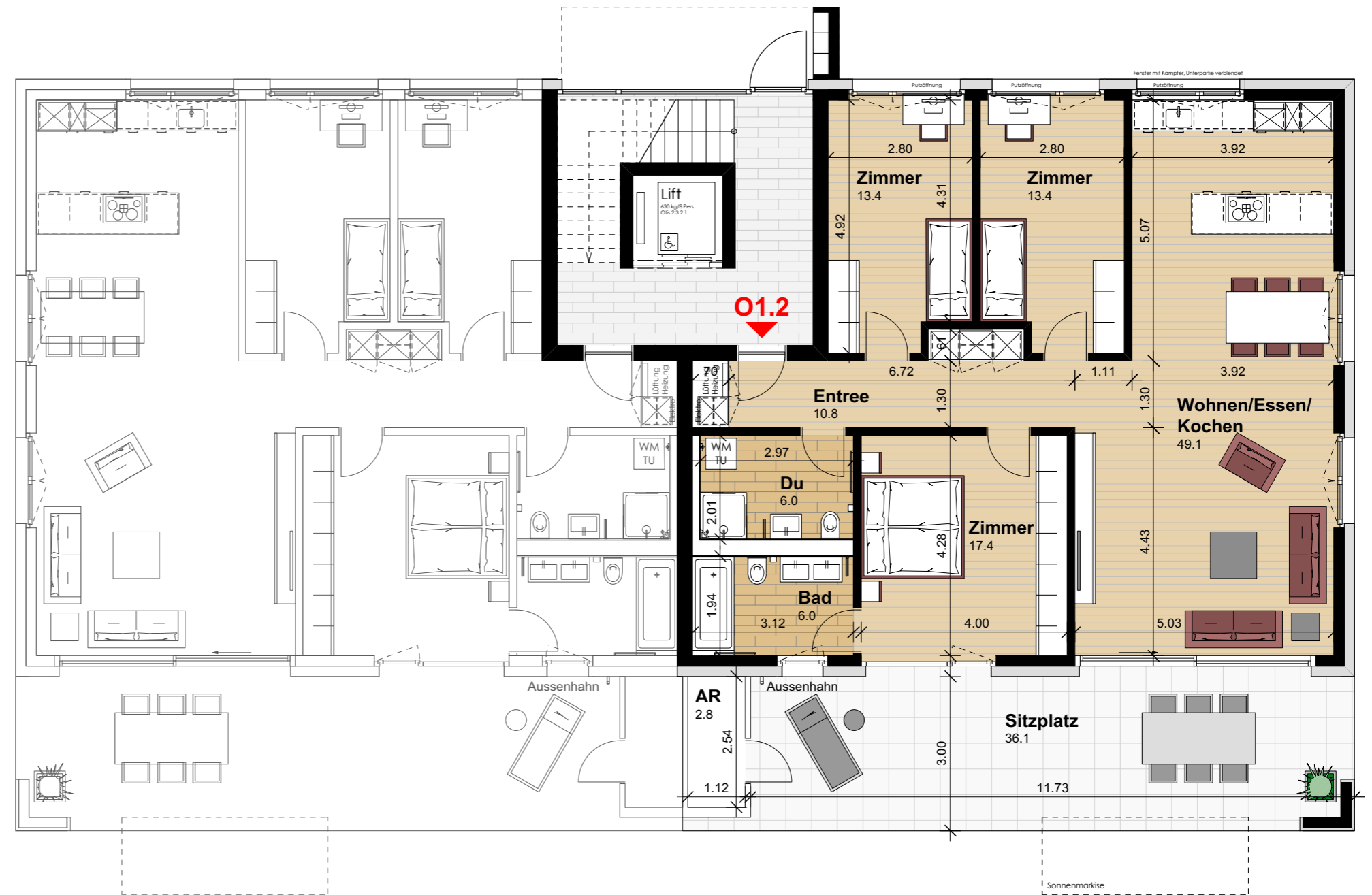


### Wohnung O1.2 (Erdgeschoss)

Anzahl Zimmer	4.5
Wohnfläche (brutto)	122.40 m <sup>2</sup>
Wohnfläche (netto)	116.10 m <sup>2</sup>
Aussenbereich	36.10 m <sup>2</sup>
Keller	10.20 m <sup>2</sup>

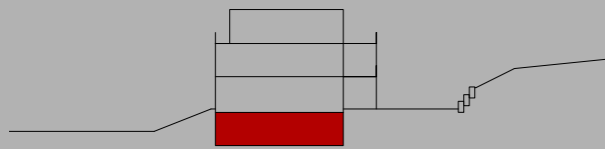
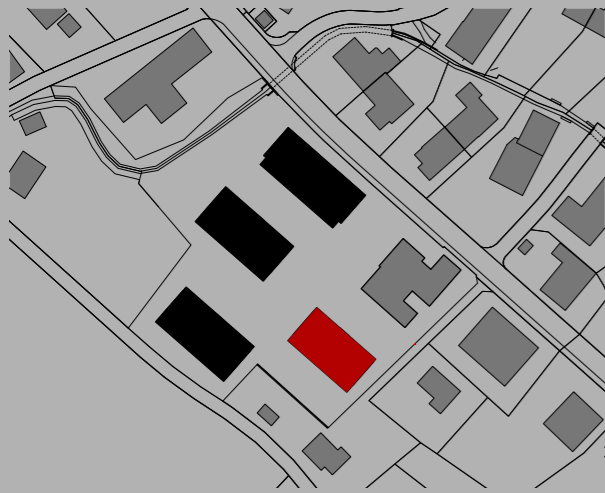


0 1 2 3 4 5m

Mst. 1:100 (1cm = 1m)

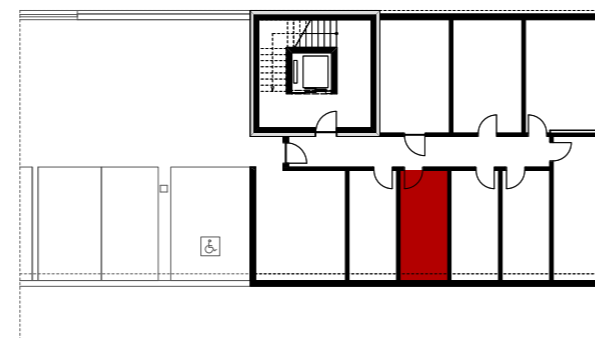
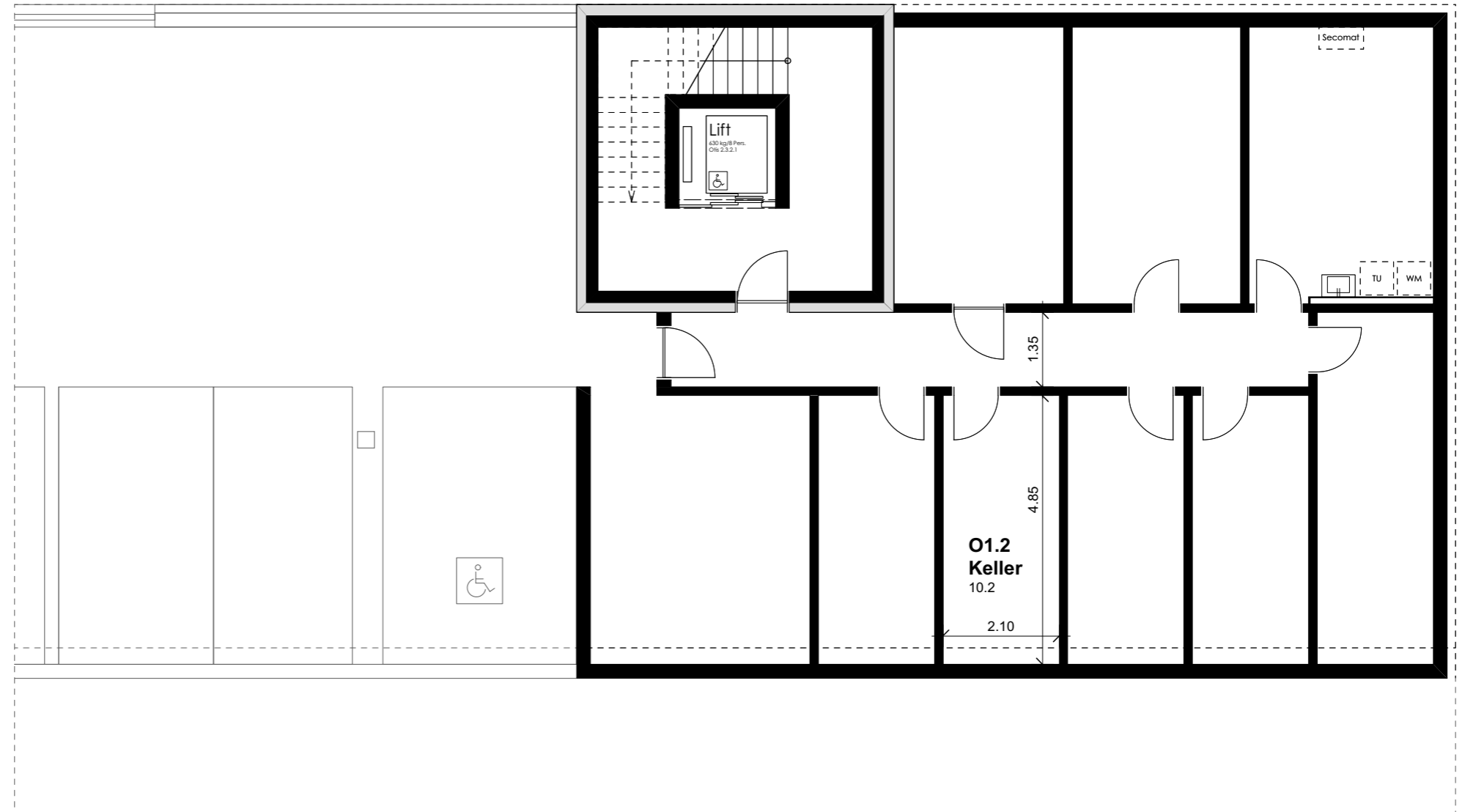
**THOMA**<sup>®</sup>  
IMMOBILIEN TREUHAND

**Beratung + Verkauf**  
THOMA Immobilien Treuhand AG  
Bahnhofstrasse 13A  
8580 Amriswil  
Tel. 071 414 50 60  
infotg@thoma-immo.ch  
www.thoma-immo.ch



### Wohnung O1.2 (Erdgeschoss)

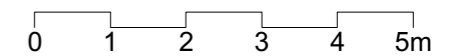
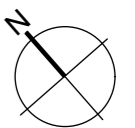
Anzahl Zimmer	4.5
Wohnfläche (brutto)	122.40 m <sup>2</sup>
Wohnfläche (netto)	116.10 m <sup>2</sup>
Aussenbereich	36.10 m <sup>2</sup>
Keller	10.20 m <sup>2</sup>



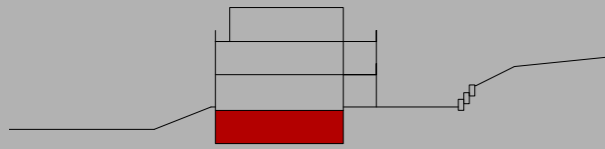
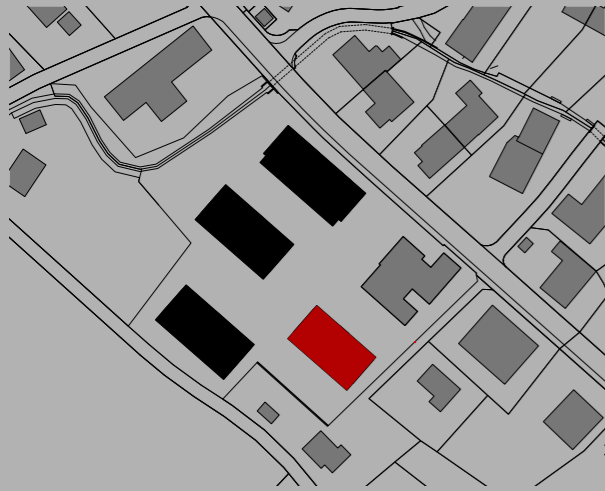
**THOMA**<sup>®</sup>  
IMMOBILIEN TREUHAND

**Beratung + Verkauf**  
THOMA Immobilien Treuhand AG  
Bahnhofstrasse 13A  
8580 Amriswil  
Tel. 071 414 50 60  
infotg@thoma-immo.ch  
www.thoma-immo.ch

20. April 2018



Mst. 1:100 (1cm = 1m)



### Wohnung O1.2 (Erdgeschoss)

Anzahl Zimmer	4.5
Wohnfläche (brutto)	122.40 m <sup>2</sup>
Wohnfläche (netto)	116.10 m <sup>2</sup>
Aussenbereich	36.10 m <sup>2</sup>
Keller	10.20 m <sup>2</sup>

**THOMA**<sup>®</sup>  
IMMOBILIEN TREUHAND

**Beratung + Verkauf**  
THOMA Immobilien Treuhand AG  
Bahnhofstrasse 13A  
8580 Amriswil  
Tel. 071 414 50 60  
infotg@thoma-immo.ch  
www.thoma-immo.ch

20. April 2018

