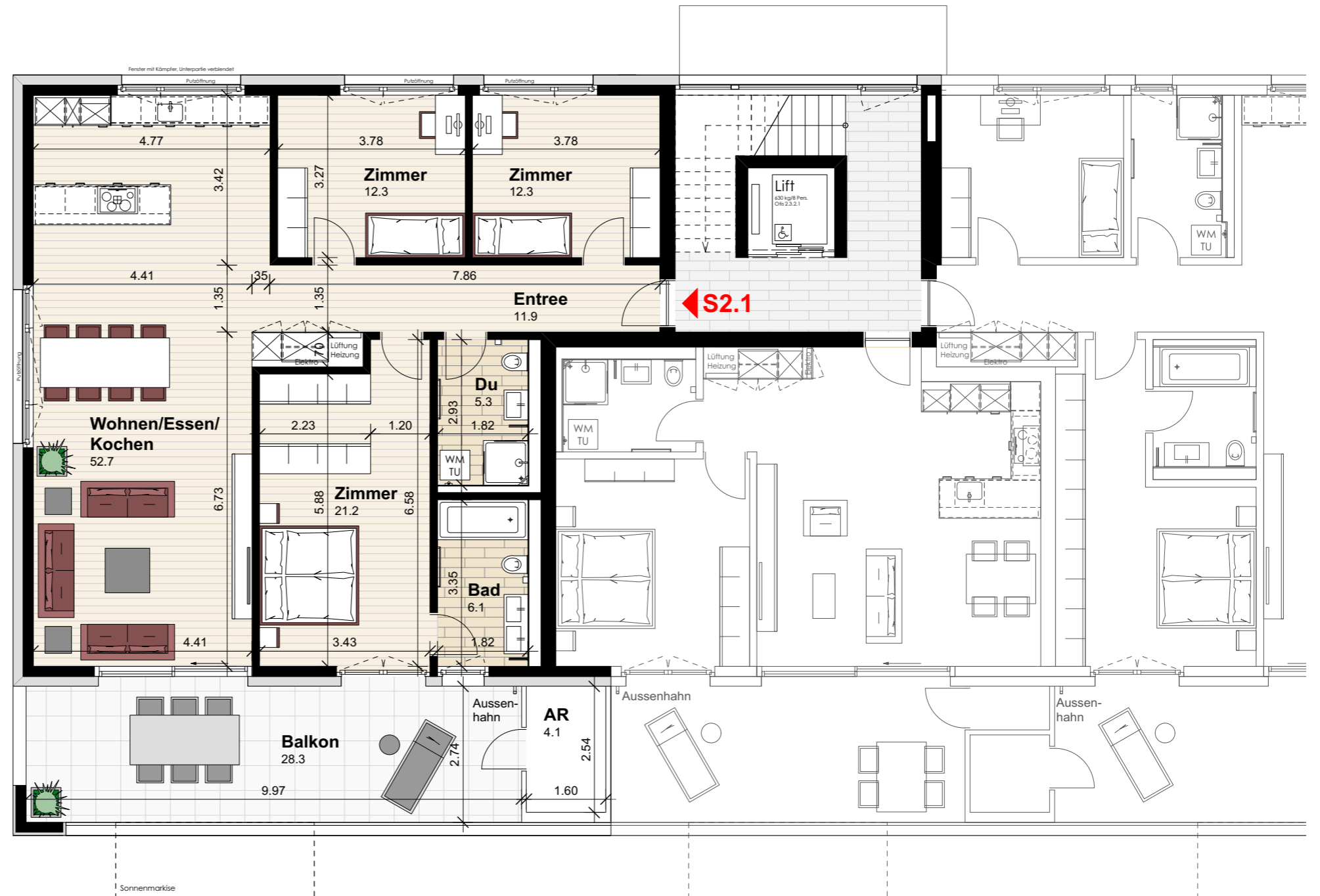


Wohnung S2.1 (Obergeschoss)

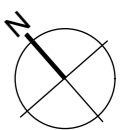
| | |
|---------------------|-----------------------|
| Anzahl Zimmer | 4.5 |
| Wohnfläche (brutto) | 129.20 m ² |
| Wohnfläche (netto) | 121.80 m ² |
| Aussenbereich | 28.30 m ² |
| Keller | 10.00 m ² |



THOMA[®]
IMMOBILIEN TREUHAND

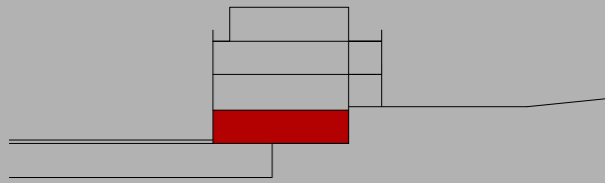
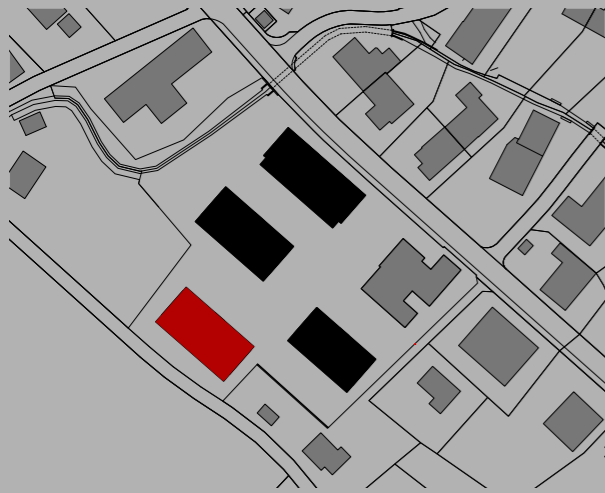
Beratung + Verkauf
THOMA Immobilien Treuhand AG
Bahnhofstrasse 13A
8580 Amriswil
Tel. 071 414 50 60
infotg@thoma-immo.ch
www.thoma-immo.ch

20. April 2018



0 1 2 3 4 5m

Mst. 1:100 (1cm = 1m)



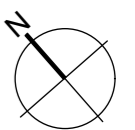
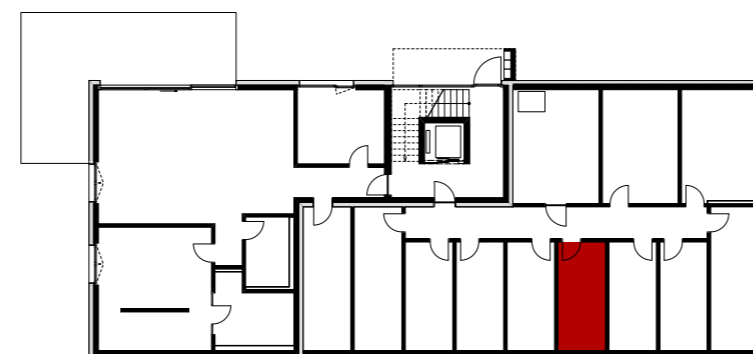
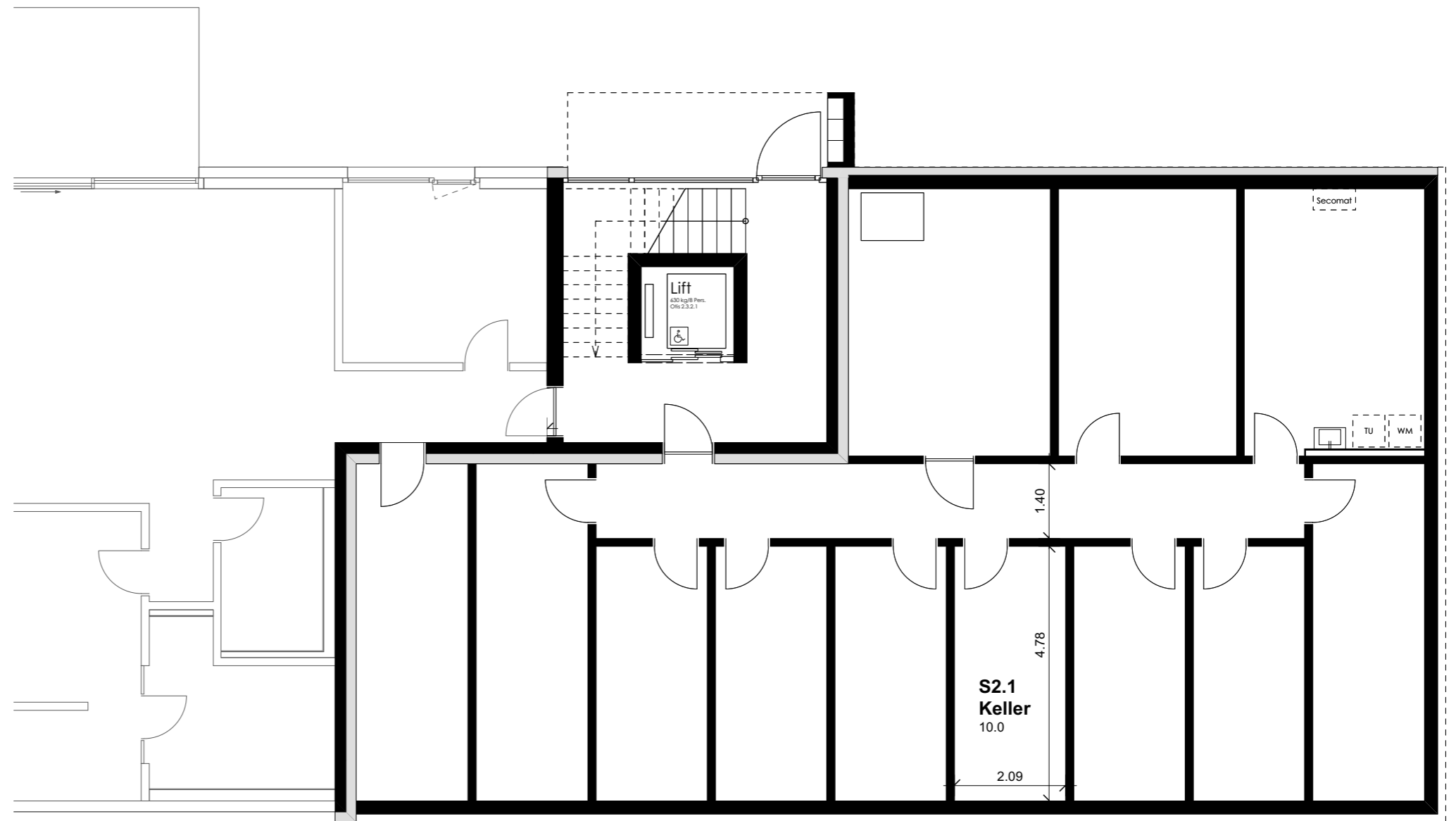
Wohnung S2.1 (Obergeschoss)

| | |
|---------------------|-----------------------|
| Anzahl Zimmer | 4.5 |
| Wohnfläche (brutto) | 129.20 m ² |
| Wohnfläche (netto) | 121.80 m ² |
| Aussenbereich | 28.30 m ² |
| Keller | 10.00 m ² |

THOMA[®]
IMMOBILIEN TREUHAND

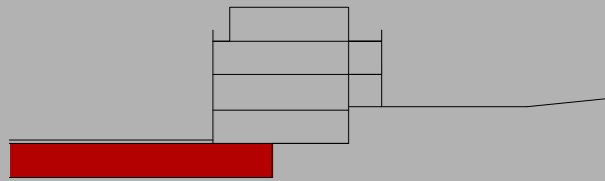
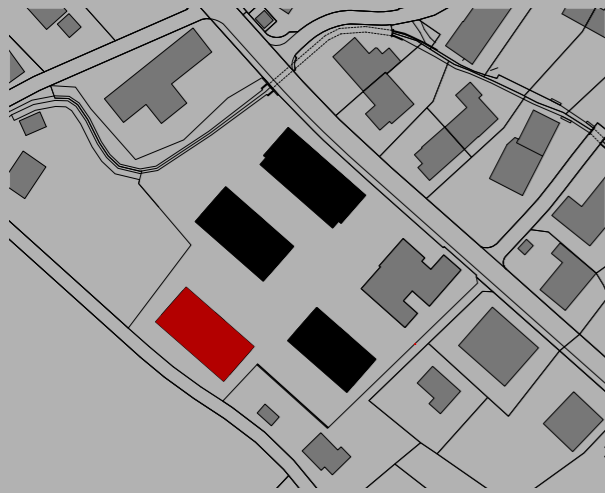
Beratung + Verkauf
THOMA Immobilien Treuhand AG
Bahnhofstrasse 13A
8580 Amriswil
Tel. 071 414 50 60
infotg@thoma-immo.ch
www.thoma-immo.ch

20. April 2018



0 1 2 3 4 5m

Mst. 1:100 (1cm = 1m)



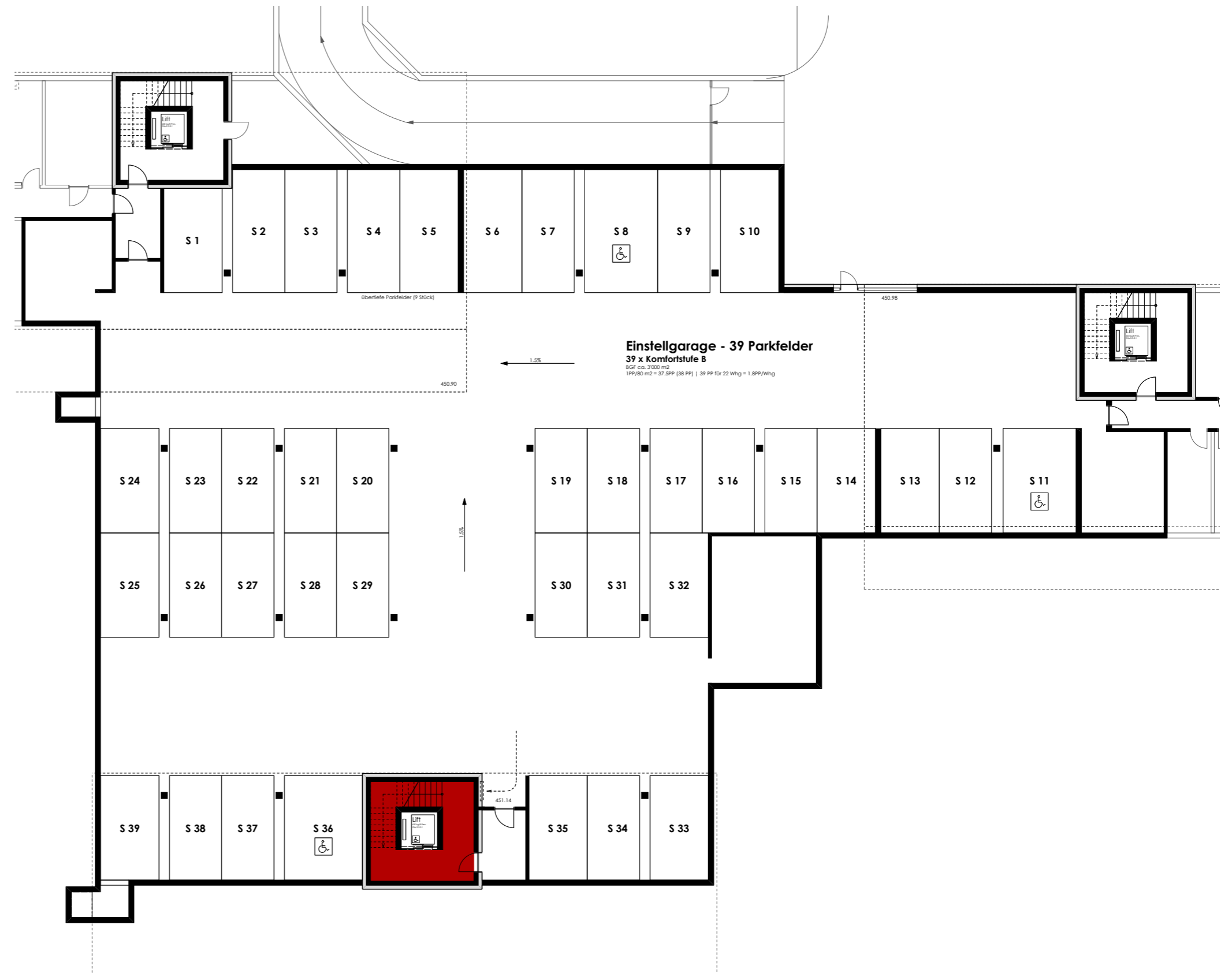
Wohnung S2.1 (Obergeschoss)

| | |
|---------------------|-----------------------|
| Anzahl Zimmer | 4.5 |
| Wohnfläche (brutto) | 129.20 m ² |
| Wohnfläche (netto) | 121.80 m ² |
| Aussenbereich | 28.30 m ² |
| Keller | 10.00 m ² |

THOMA[®]
IMMOBILIEN TREUHAND

Beratung + Verkauf
THOMA Immobilien Treuhand AG
Bahnhofstrasse 13A
8580 Amriswil
Tel. 071 414 50 60
infotg@thoma-immo.ch
www.thoma-immo.ch

20. April 2018



0 1 2 3 4 5m
Massstab unbestimmt