

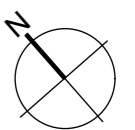
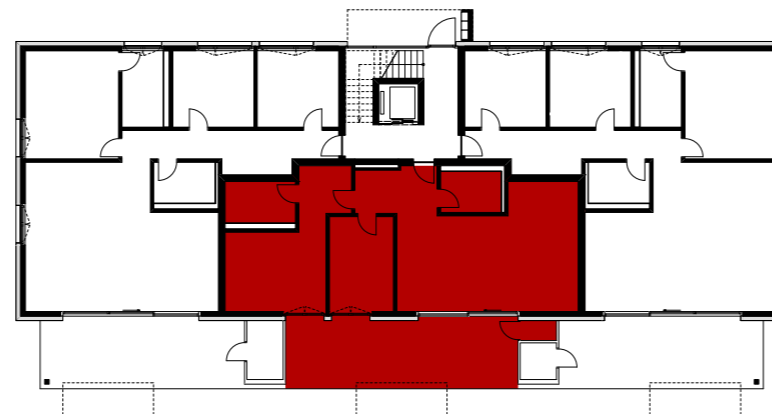
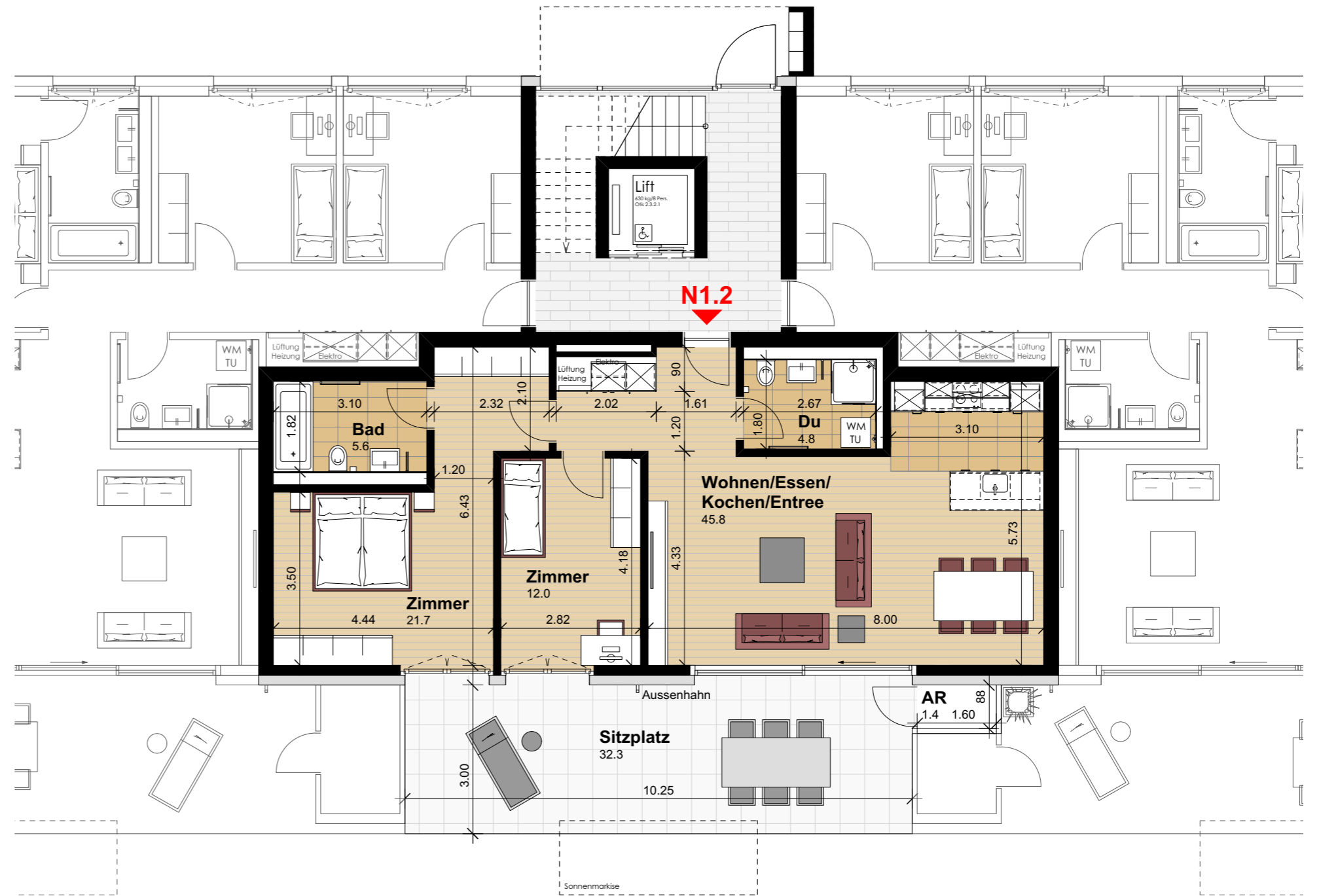
Wohnung N1.2 (Erdgeschoss)

| | |
|---------------------|----------------------|
| Anzahl Zimmer | 3.5 |
| Wohnfläche (brutto) | 95.50 m ² |
| Wohnfläche (netto) | 89.90 m ² |
| Aussenbereich | 32.30 m ² |
| Keller | 7.60 m ² |

THOMA[®]
IMMOBILIEN TREUHAND

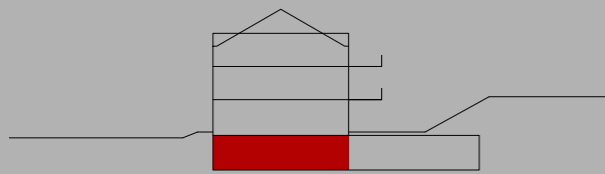
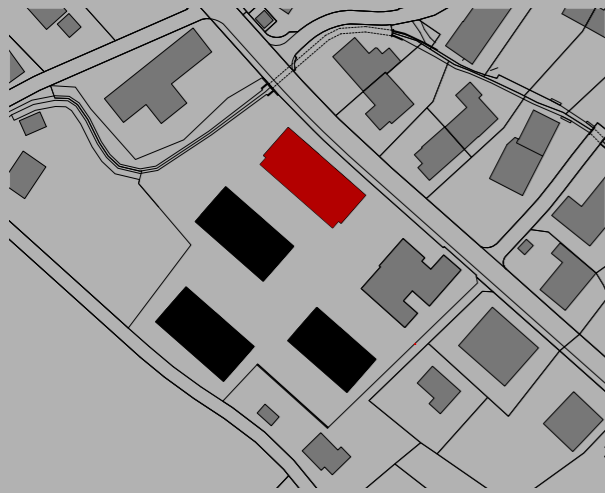
Beratung + Verkauf
THOMA Immobilien Treuhand AG
Bahnhofstrasse 13A
8580 Amriswil
Tel. 071 414 50 60
infotg@thoma-immo.ch
www.thoma-immo.ch

20. April 2018



0 1 2 3 4 5m

Mst. 1:100 (1cm = 1m)



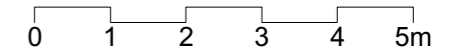
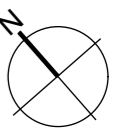
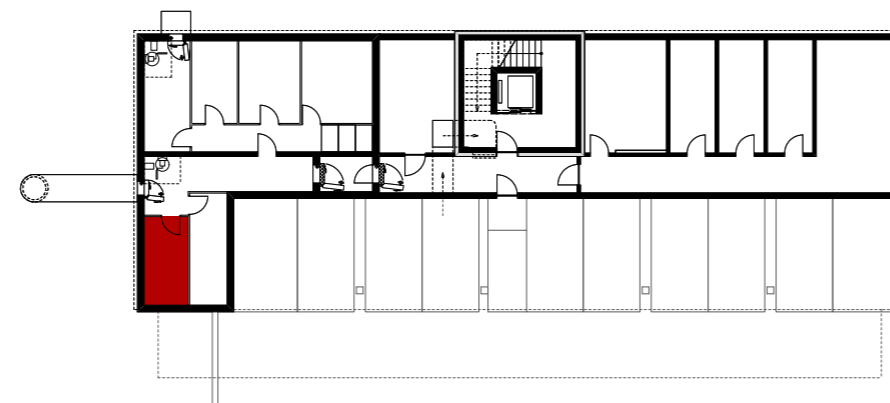
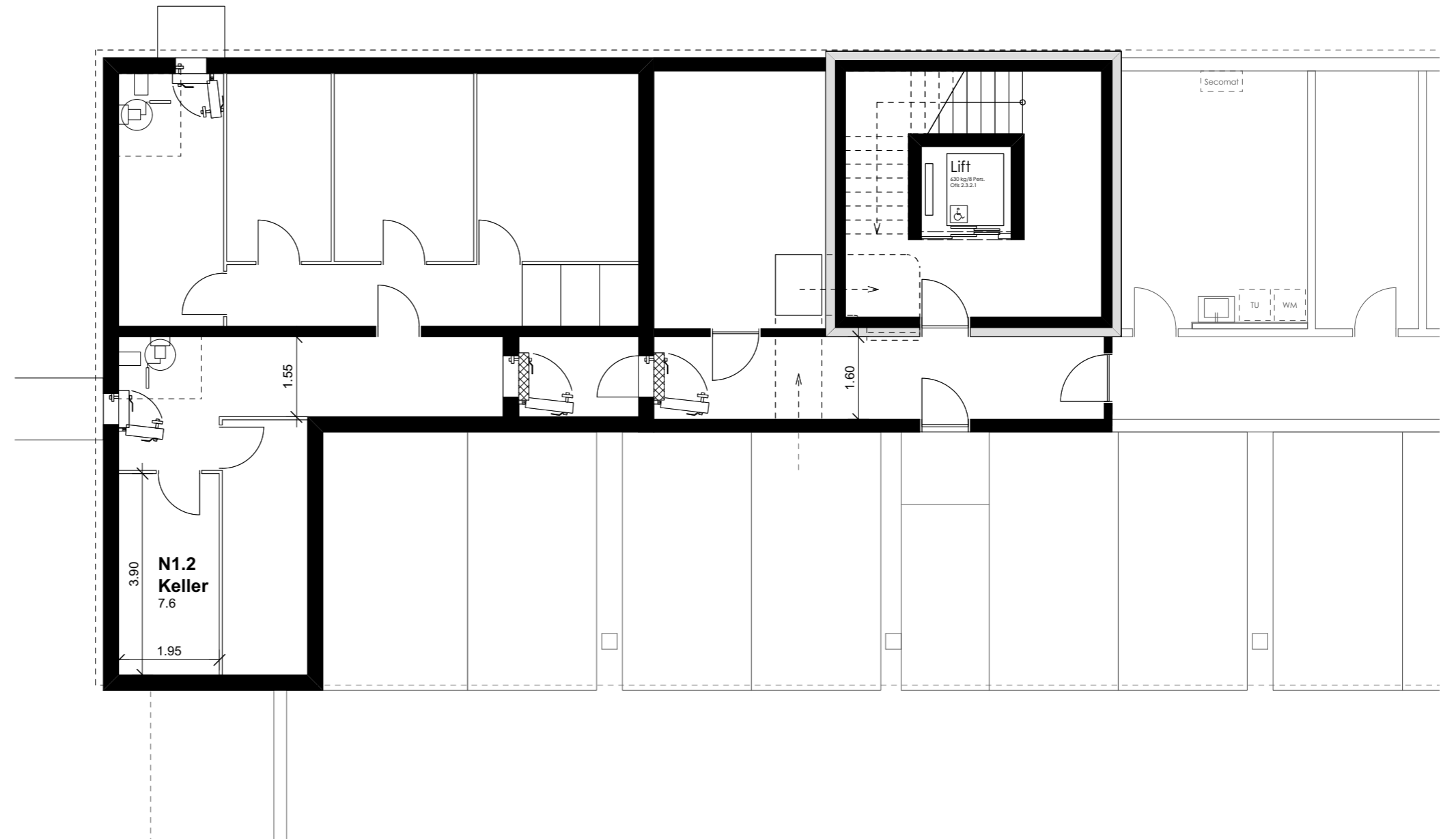
Wohnung N1.2 (Erdgeschoss)

| | |
|---------------------|----------------------|
| Anzahl Zimmer | 3.5 |
| Wohnfläche (brutto) | 95.50 m ² |
| Wohnfläche (netto) | 89.90 m ² |
| Aussenbereich | 32.30 m ² |
| Keller | 7.60 m ² |

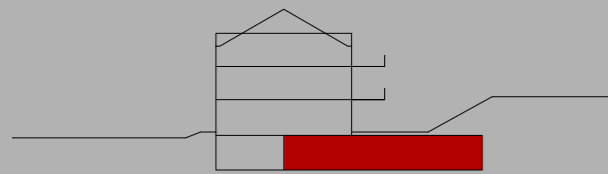
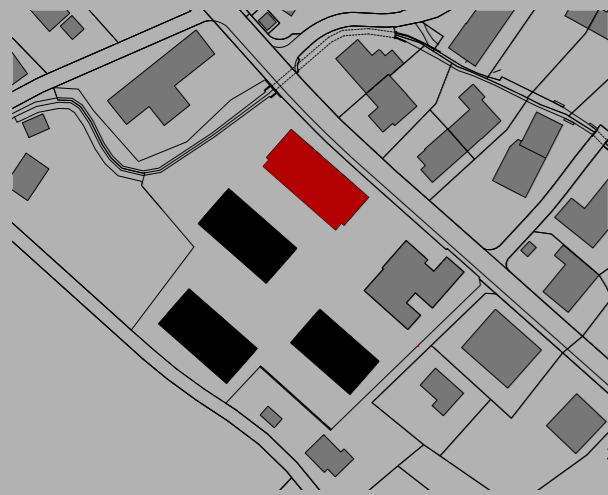
THOMA[®]
IMMOBILIEN TREUHAND

Beratung + Verkauf
THOMA Immobilien Treuhand AG
Bahnhofstrasse 13A
8580 Amriswil
Tel. 071 414 50 60
infotg@thoma-immo.ch
www.thoma-immo.ch

20. April 2018



Mst. 1:100 (1cm = 1m)



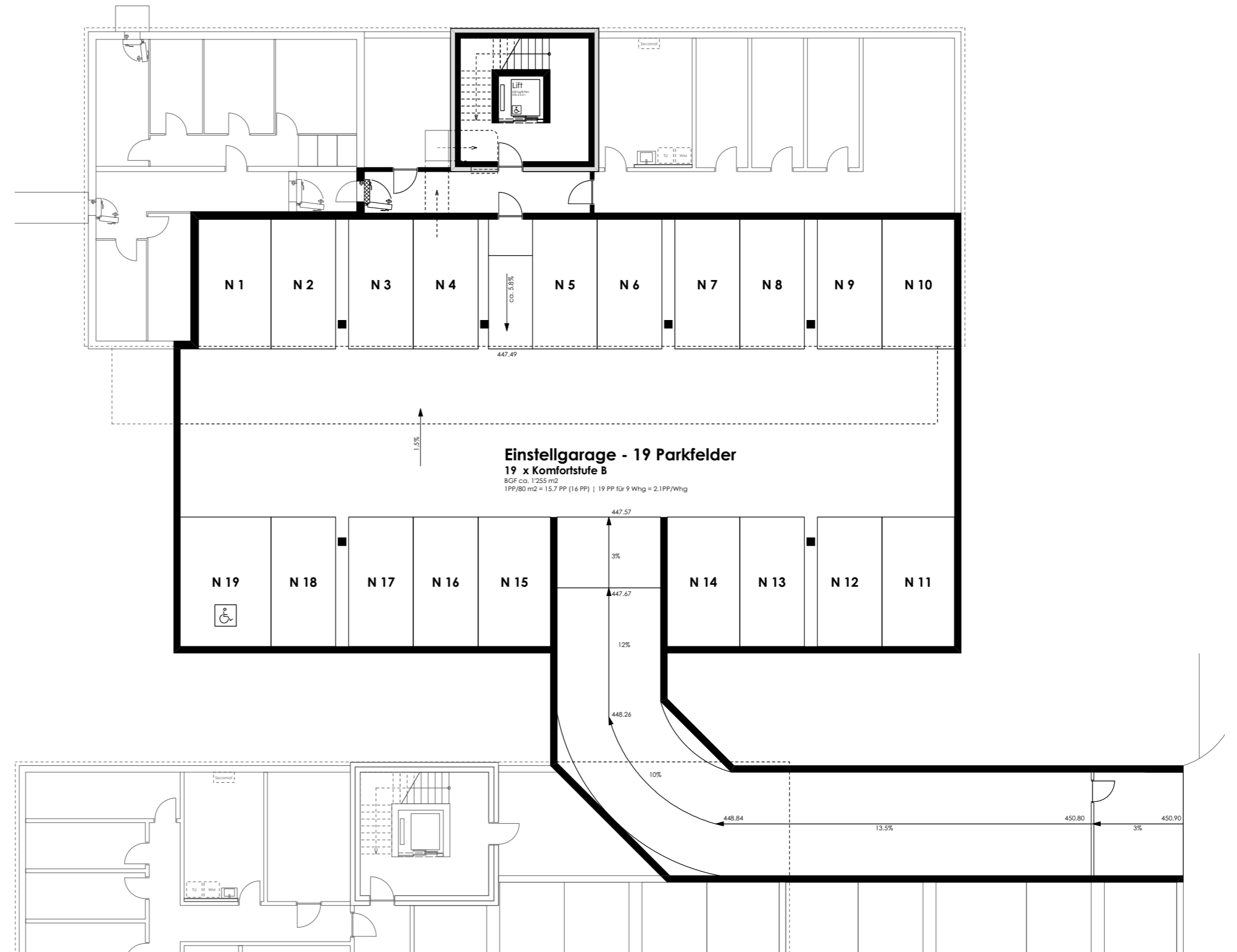
Wohnung N1.2 (Erdgeschoss)

| | |
|---------------------|----------------------|
| Anzahl Zimmer | 3.5 |
| Wohnfläche (brutto) | 95.50 m ² |
| Wohnfläche (netto) | 89.90 m ² |
| Aussenbereich | 32.30 m ² |
| Keller | 7.60 m ² |

THOMA
IMMOBILIEN TREUHAND

Beratung + Verkauf
THOMA Immobilien Treuhand AG
Bahnhofstrasse 13A
8580 Amriswil
Tel. 071 414 50 60
infotg@thoma-immo.ch
www.thoma-immo.ch

20. April 2018



0 1 2 3 4 5m
Massstab unbestimmt