

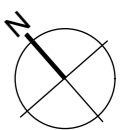
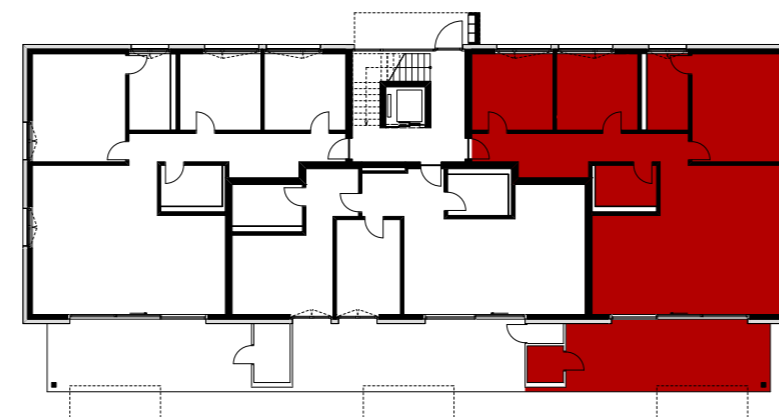
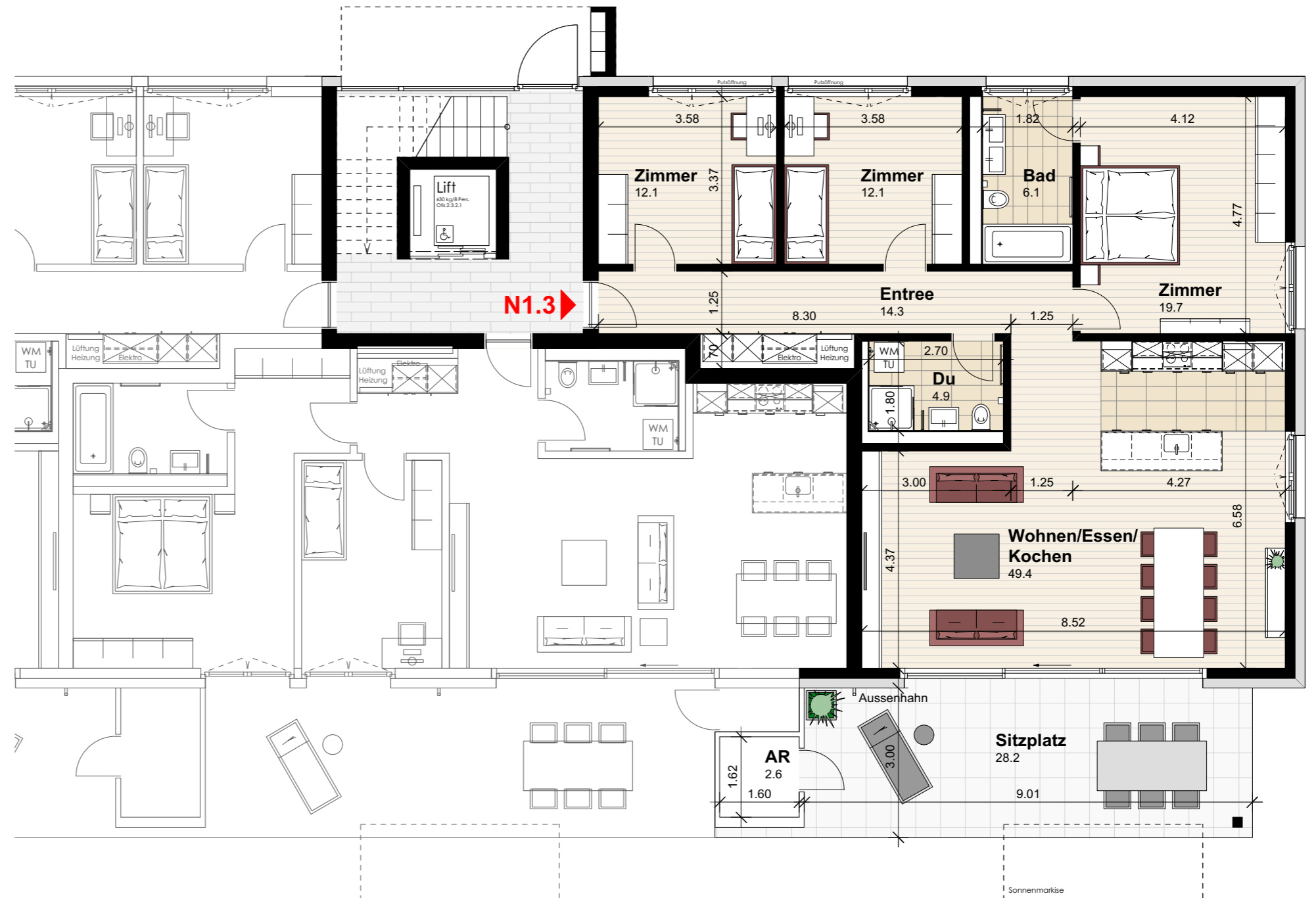
Wohnung N1.3 (Erdgeschoss)

Anzahl Zimmer	4.5
Wohnfläche (brutto)	125.50 m ²
Wohnfläche (netto)	118.60 m ²
Aussenbereich	28.20 m ²
Keller	9.90 m ²

THOMA[®]
IMMOBILIEN TREUHAND

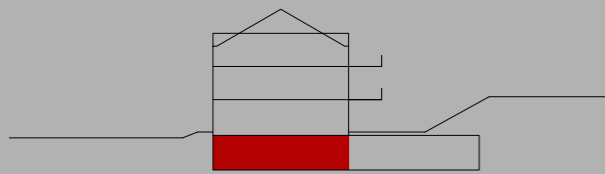
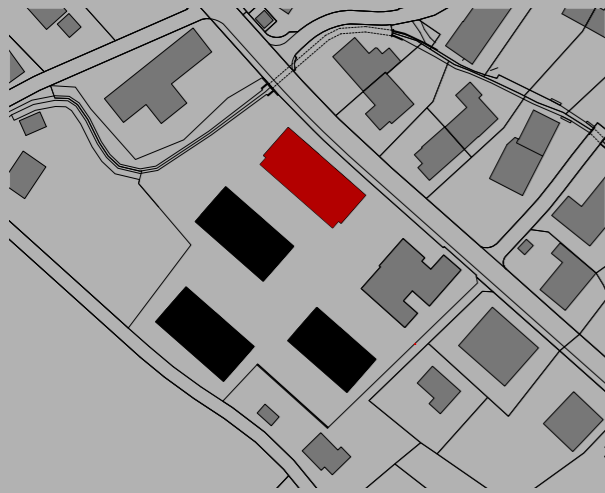
Beratung + Verkauf
THOMA Immobilien Treuhand AG
Bahnhofstrasse 13A
8580 Amriswil
Tel. 071 414 50 60
infotg@thoma-immo.ch
www.thoma-immo.ch

20. April 2018



0 1 2 3 4 5m

Mst. 1:100 (1cm = 1m)



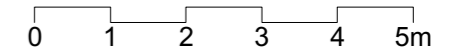
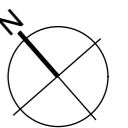
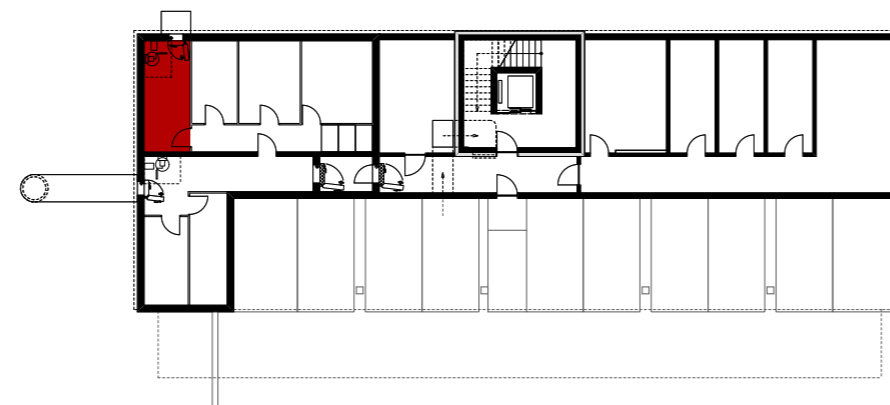
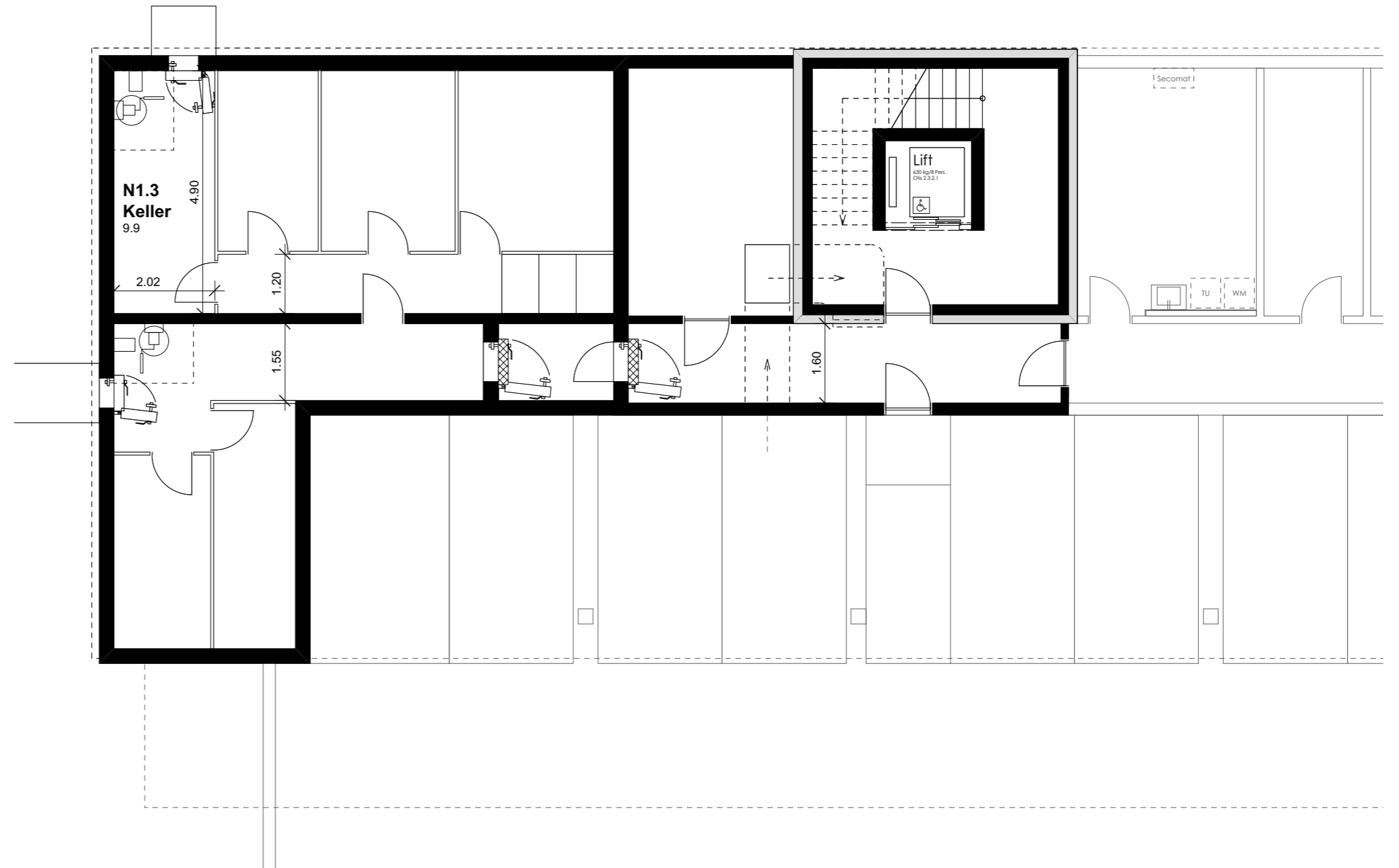
Wohnung N1.3 (Erdgeschoss)

Anzahl Zimmer	4.5
Wohnfläche (brutto)	125.50 m ²
Wohnfläche (netto)	118.60 m ²
Aussenbereich	28.20 m ²
Keller	9.90 m ²

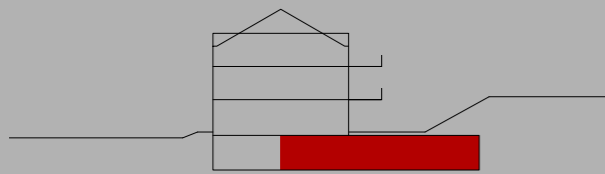
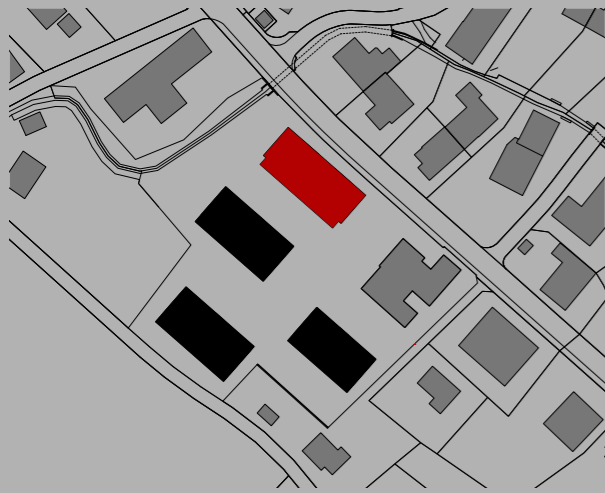
THOMA[®]
IMMOBILIEN TREUHAND

Beratung + Verkauf
THOMA Immobilien Treuhand AG
Bahnhofstrasse 13A
8580 Amriswil
Tel. 071 414 50 60
infotg@thoma-immo.ch
www.thoma-immo.ch

20. April 2018



Mst. 1:100 (1cm = 1m)



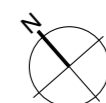
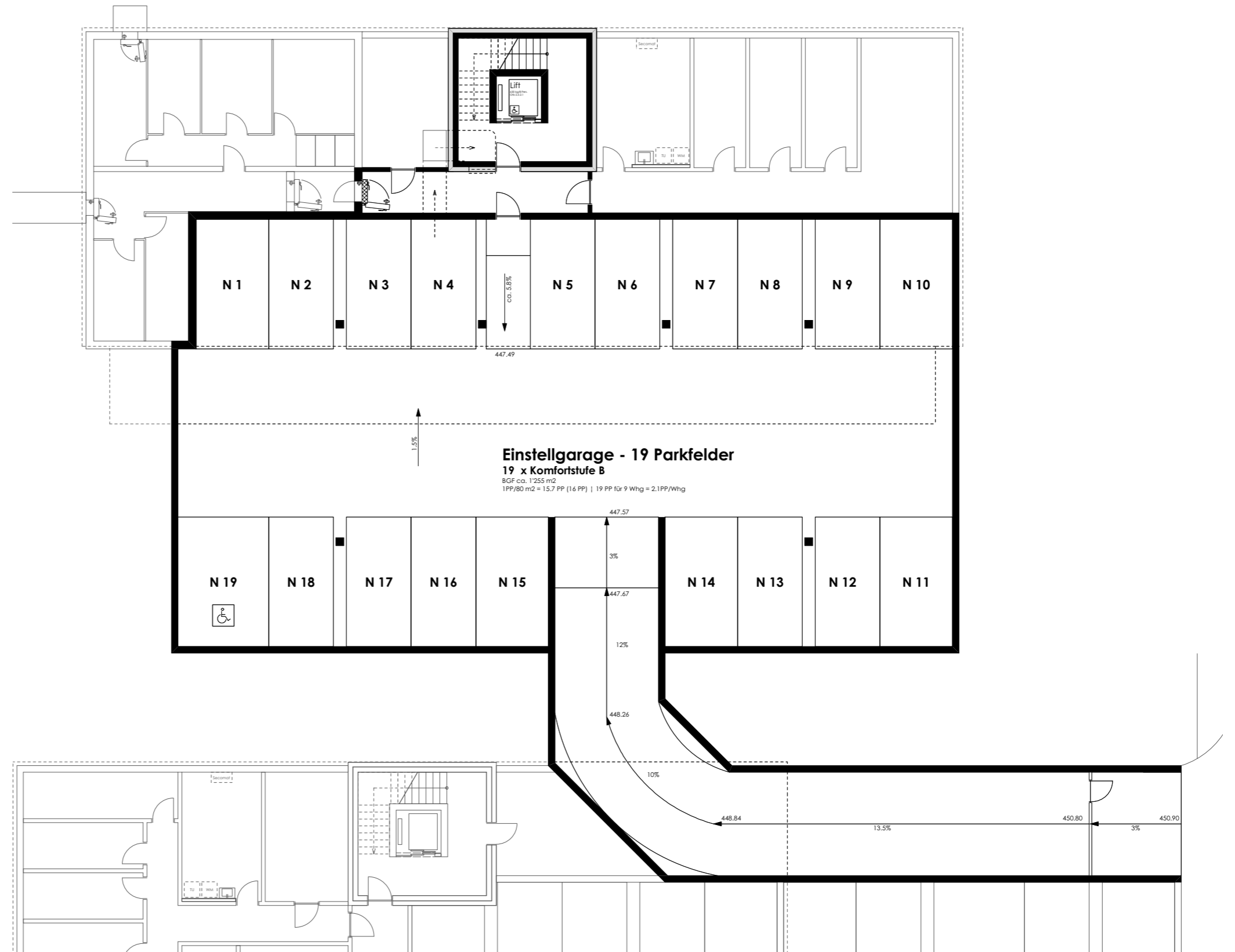
Wohnung N1.3 (Erdgeschoss)

Anzahl Zimmer	4.5
Wohnfläche (brutto)	125.50 m ²
Wohnfläche (netto)	118.60 m ²
Aussenbereich	28.20 m ²
Keller	9.90 m ²

THOMA
IMMOBILIEN TREUHAND

Beratung + Verkauf
THOMA Immobilien Treuhand AG
Bahnhofstrasse 13A
8580 Amriswil
Tel. 071 414 50 60
infotg@thoma-immo.ch
www.thoma-immo.ch

20. April 2018



0 1 2 3 4 5m
Massstab unbestimmt