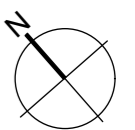
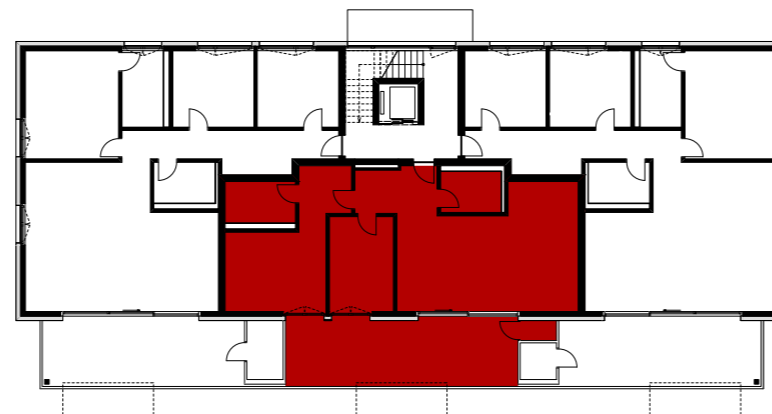
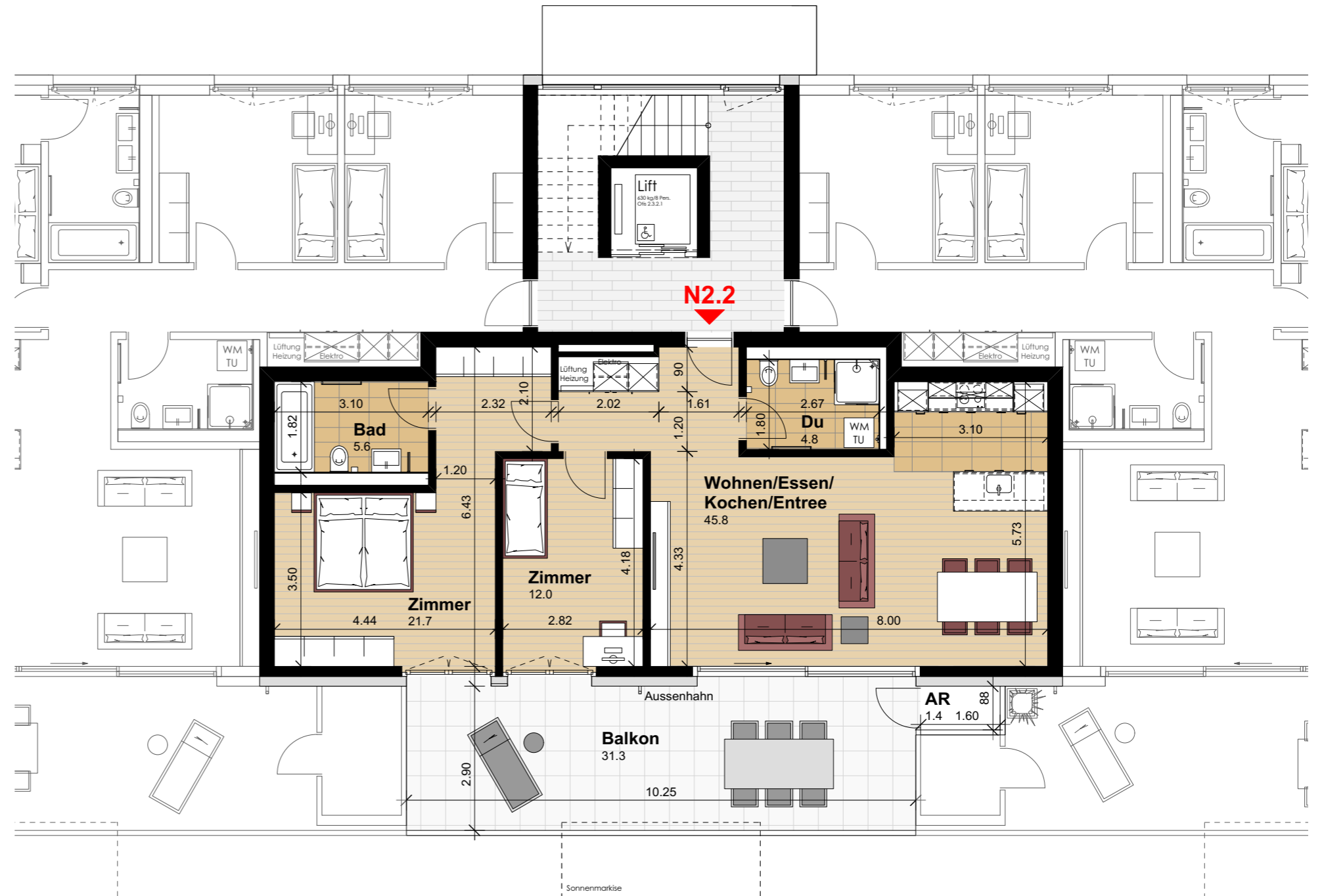


### Wohnung N2.2 (Obergeschoss)

|                     |                      |
|---------------------|----------------------|
| Anzahl Zimmer       | 3.5                  |
| Wohnfläche (brutto) | 95.50 m <sup>2</sup> |
| Wohnfläche (netto)  | 89.90 m <sup>2</sup> |
| Aussenbereich       | 31.30 m <sup>2</sup> |
| Keller              | 7.40 m <sup>2</sup>  |

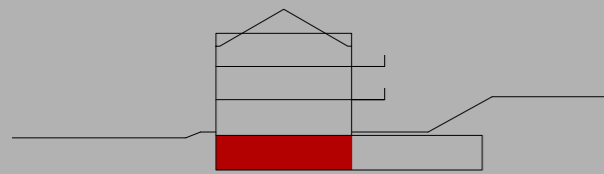
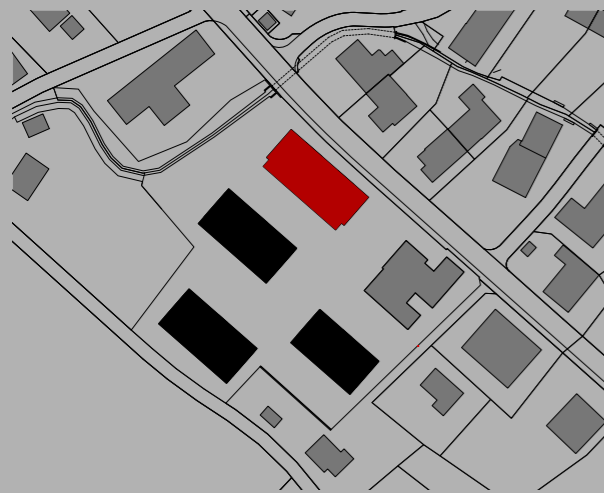


0 1 2 3 4 5m

Mst. 1:100 (1cm = 1m)

**THOMA**<sup>®</sup>  
IMMOBILIEN TREUHAND

**Beratung + Verkauf**  
THOMA Immobilien Treuhand AG  
Bahnhofstrasse 13A  
8580 Amriswil  
Tel. 071 414 50 60  
infotg@thoma-immo.ch  
www.thoma-immo.ch



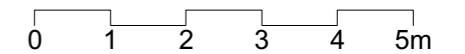
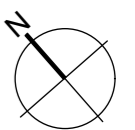
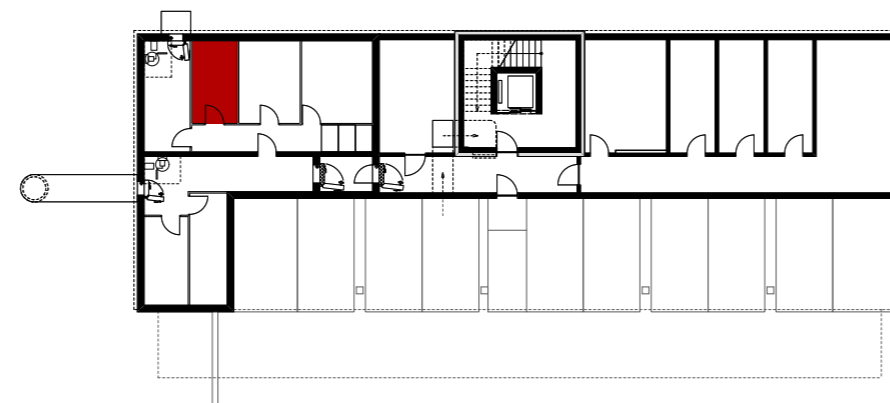
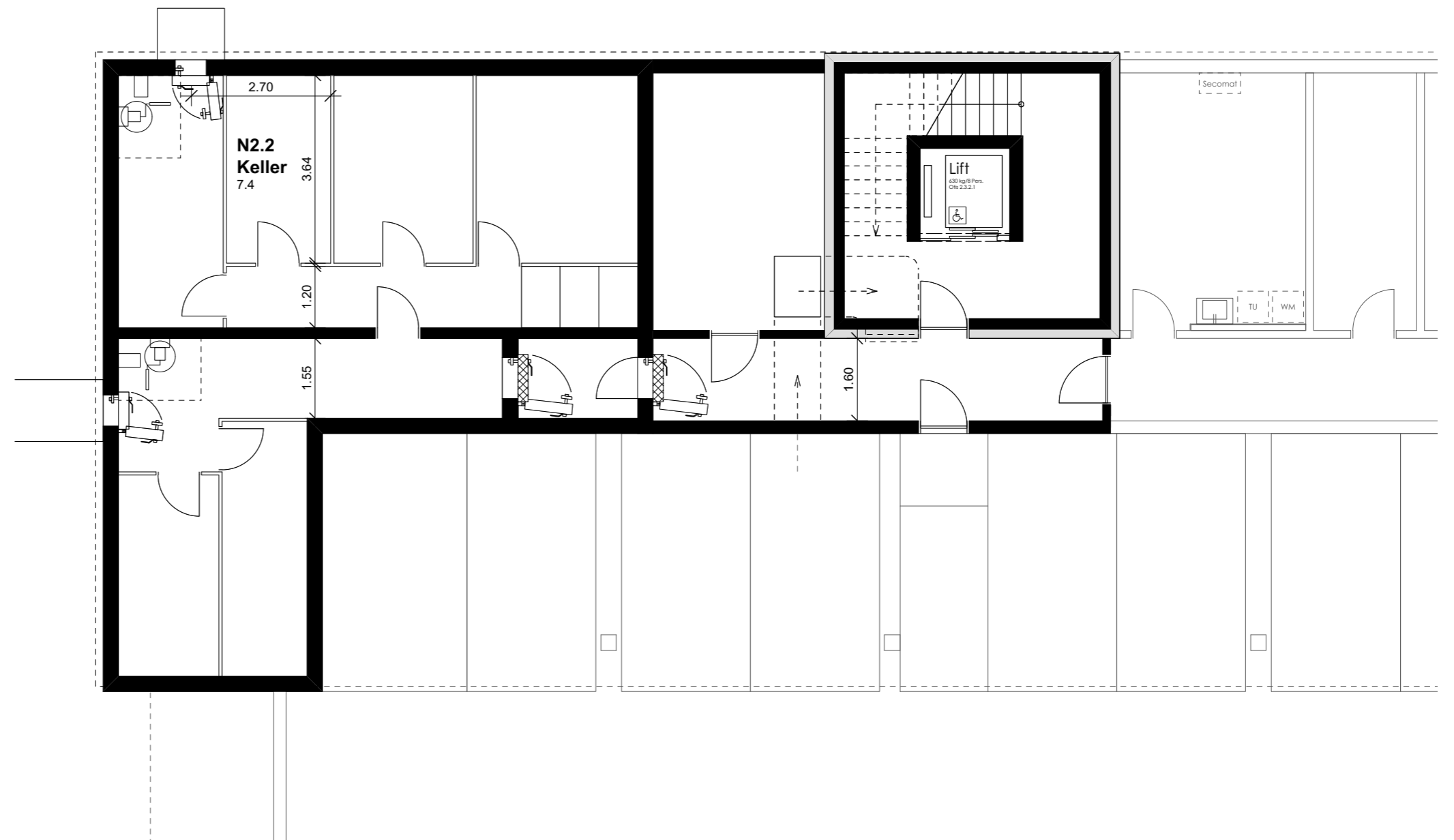
### Wohnung N2.2 (Obergeschoss)

|                     |                      |
|---------------------|----------------------|
| Anzahl Zimmer       | 3.5                  |
| Wohnfläche (brutto) | 95.50 m <sup>2</sup> |
| Wohnfläche (netto)  | 89.90 m <sup>2</sup> |
| Aussenbereich       | 31.30 m <sup>2</sup> |
| Keller              | 7.40 m <sup>2</sup>  |

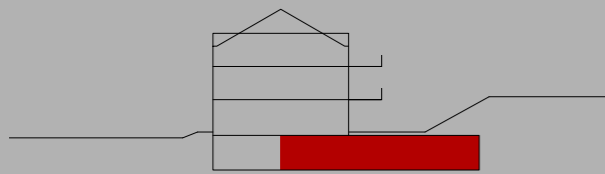
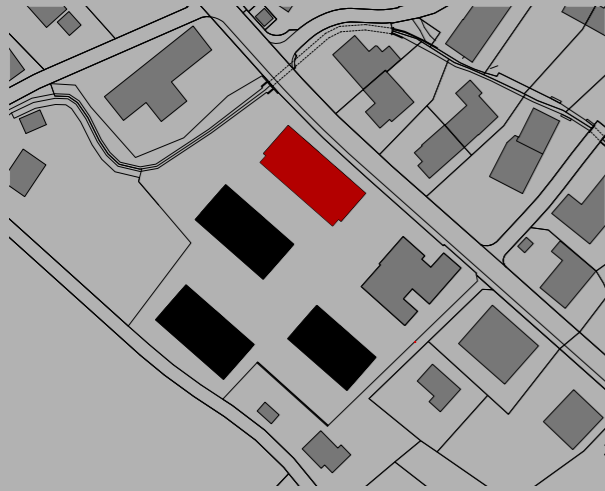
**THOMA**<sup>®</sup>  
IMMOBILIEN TREUHAND

**Beratung + Verkauf**  
THOMA Immobilien Treuhand AG  
Bahnhofstrasse 13A  
8580 Amriswil  
Tel. 071 414 50 60  
infotg@thoma-immo.ch  
www.thoma-immo.ch

20. April 2018



Mst. 1:100 (1cm = 1m)



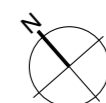
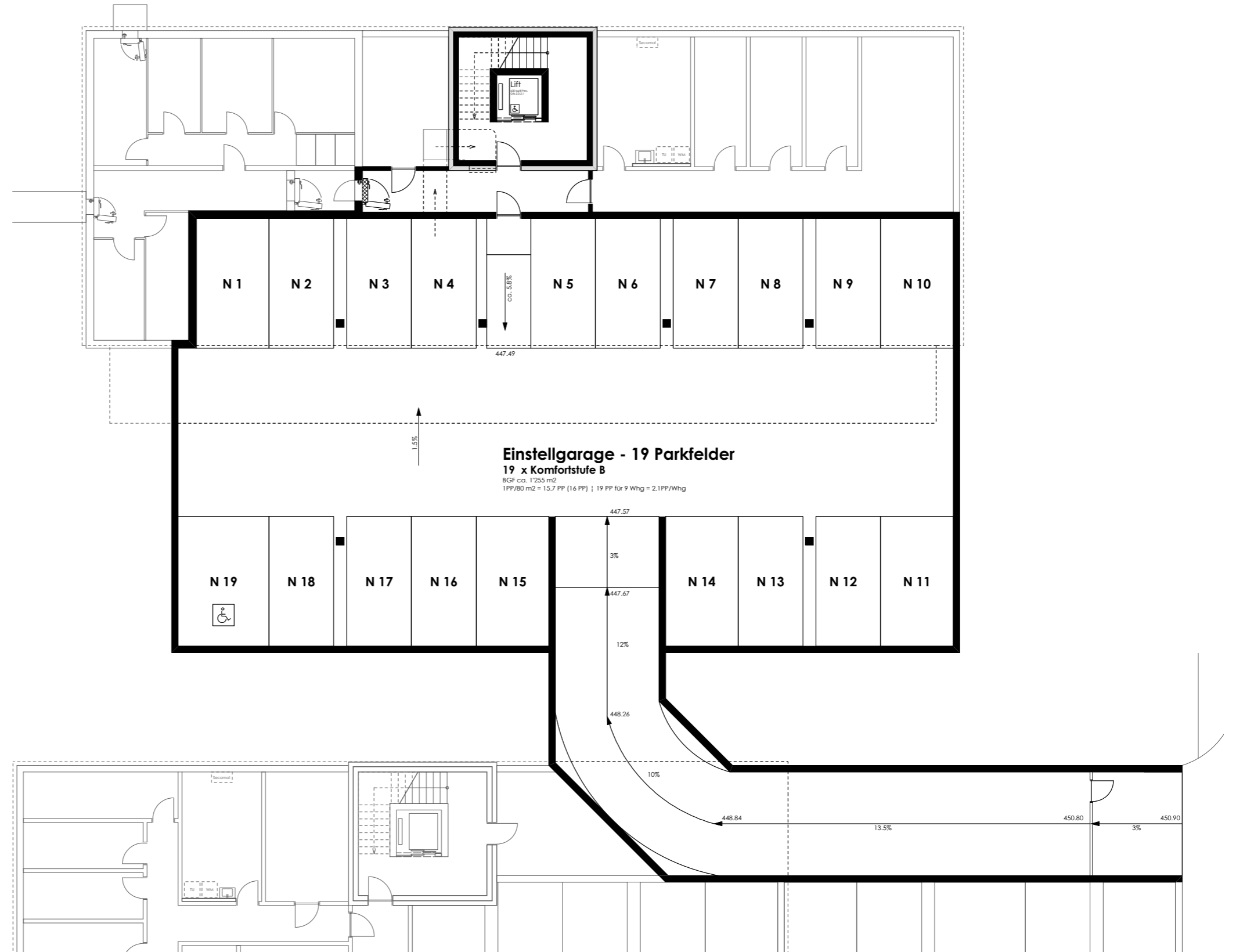
### Wohnung N2.2 (Obergeschoss)

|                     |                      |
|---------------------|----------------------|
| Anzahl Zimmer       | 3.5                  |
| Wohnfläche (brutto) | 95.50 m <sup>2</sup> |
| Wohnfläche (netto)  | 89.90 m <sup>2</sup> |
| Aussenbereich       | 31.30 m <sup>2</sup> |
| Keller              | 7.40 m <sup>2</sup>  |

**THOMA**<sup>®</sup>  
IMMOBILIEN TREUHAND

**Beratung + Verkauf**  
THOMA Immobilien Treuhand AG  
Bahnhofstrasse 13A  
8580 Amriswil  
Tel. 071 414 50 60  
infotg@thoma-immo.ch  
www.thoma-immo.ch

20. April 2018



0 1 2 3 4 5m  
Massstab unbestimmt