

### Wohnung N3.2 (Dachgeschoss)

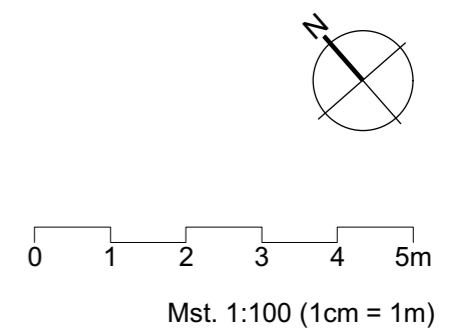
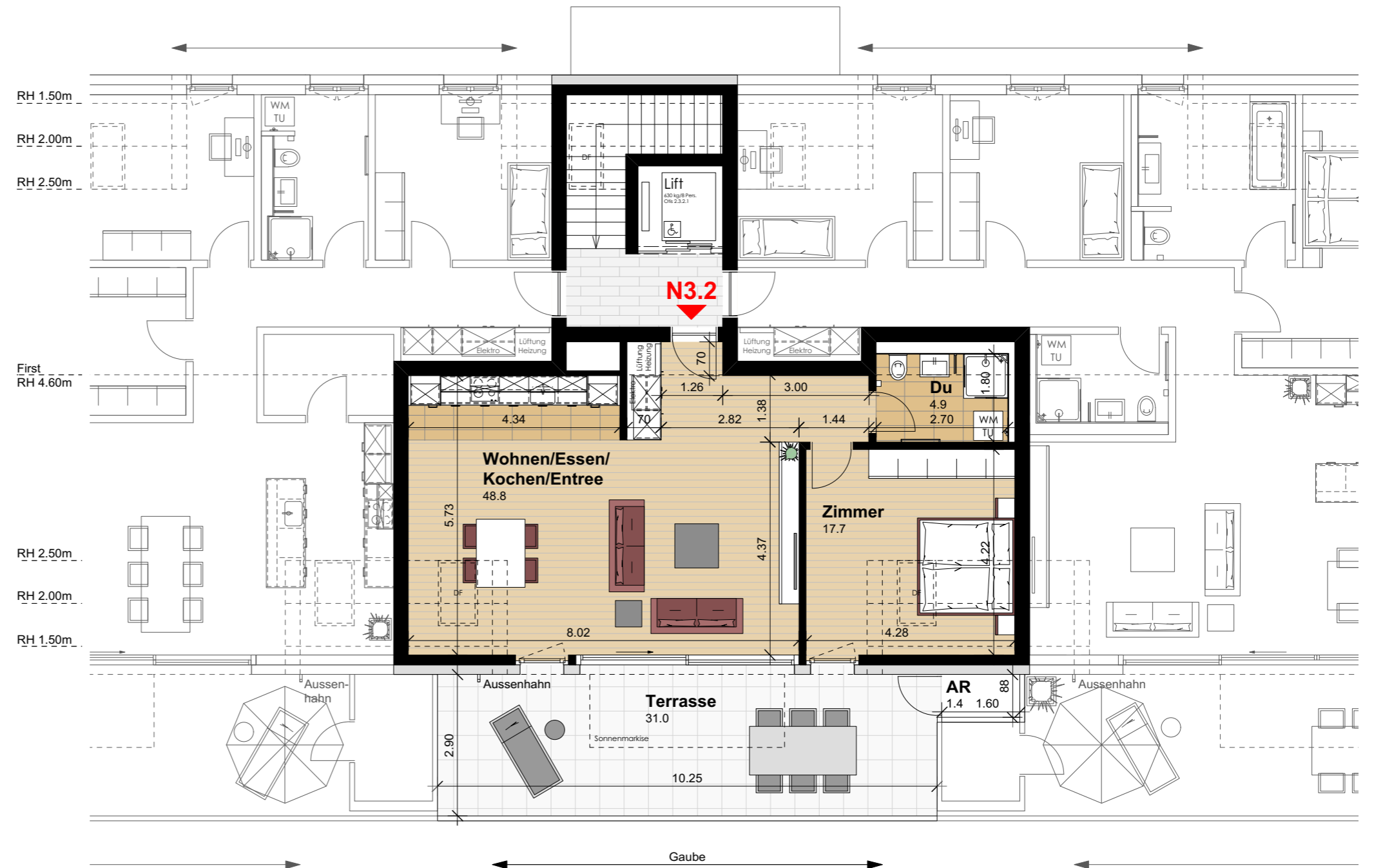
Anzahl Zimmer	2.5
Wohnfläche (brutto)*	74.10 m <sup>2</sup>
Wohnfläche (netto)*	71.40 m <sup>2</sup>
Aussenbereich	31.00 m <sup>2</sup>
Keller	10.00 m <sup>2</sup>

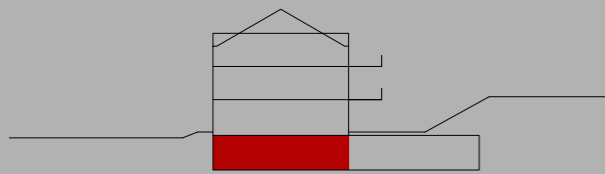
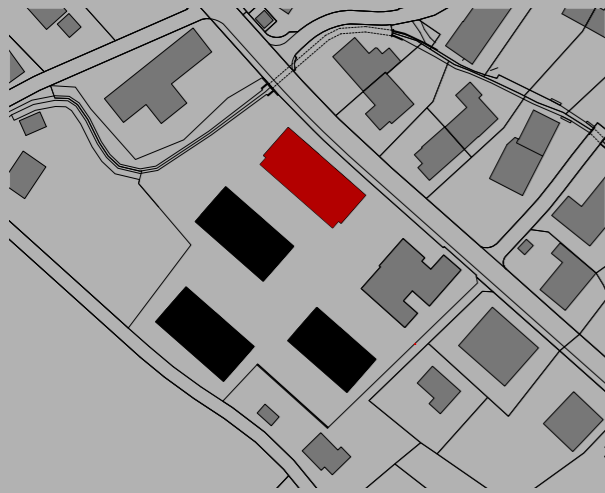
\* gemessen ab Raumhöhe 1.50m

**THOMA**<sup>®</sup>  
IMMOBILIEN TREUHAND

**Beratung + Verkauf**  
THOMA Immobilien Treuhand AG  
Bahnhofstrasse 13A  
8580 Amriswil  
Tel. 071 414 50 60  
infotg@thoma-immo.ch  
www.thoma-immo.ch

20. April 2018





### Wohnung N3.2 (Dachgeschoss)

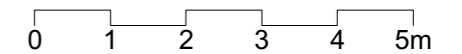
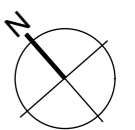
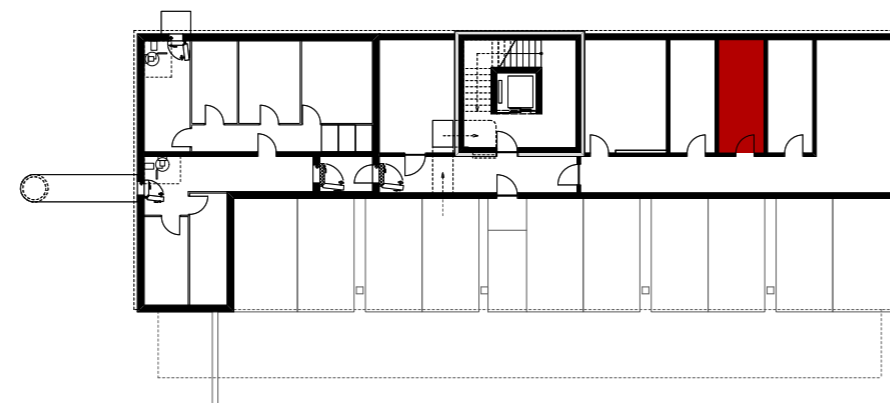
Anzahl Zimmer	2.5
Wohnfläche (brutto)*	74.10 m <sup>2</sup>
Wohnfläche (netto)*	71.40 m <sup>2</sup>
Aussenbereich	31.00 m <sup>2</sup>
Keller	10.00 m <sup>2</sup>

\* gemessen ab Raumhöhe 1.50m

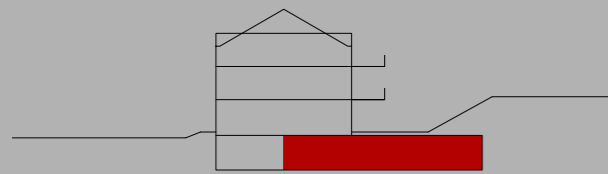
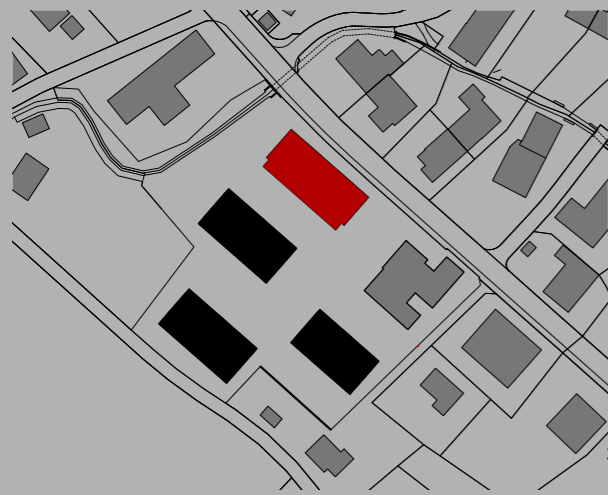
**THOMA**<sup>®</sup>  
IMMOBILIEN TREUHAND

**Beratung + Verkauf**  
THOMA Immobilien Treuhand AG  
Bahnhofstrasse 13A  
8580 Amriswil  
Tel. 071 414 50 60  
infotg@thoma-immo.ch  
www.thoma-immo.ch

20. April 2018



Mst. 1:100 (1cm = 1m)



### Wohnung N3.2 (Dachgeschoss)

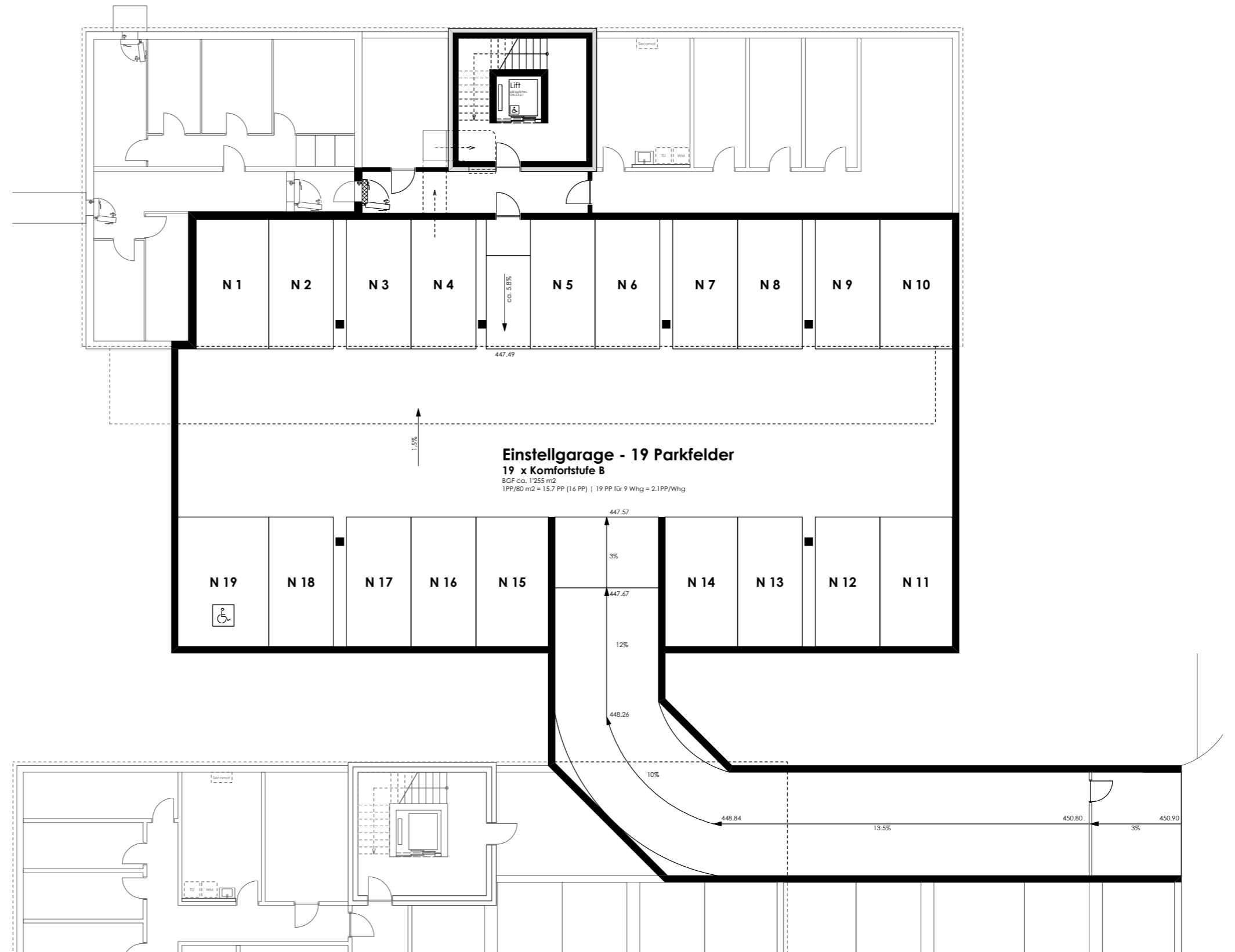
Anzahl Zimmer	2.5
Wohnfläche (brutto)*	74.10 m <sup>2</sup>
Wohnfläche (netto)*	71.40 m <sup>2</sup>
Aussenbereich	31.00 m <sup>2</sup>
Keller	10.00 m <sup>2</sup>

\* gemessen ab Raumhöhe 1.50m

**THOMA**  
IMMOBILIEN TREUHAND

**Beratung + Verkauf**  
THOMA Immobilien Treuhand AG  
Bahnhofstrasse 13A  
8580 Amriswil  
Tel. 071 414 50 60  
infotg@thoma-immo.ch  
www.thoma-immo.ch

20. April 2018



0 1 2 3 4 5m  
Massstab unbestimmt