

Wohnung N3.3 (Dachgeschoss)

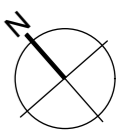
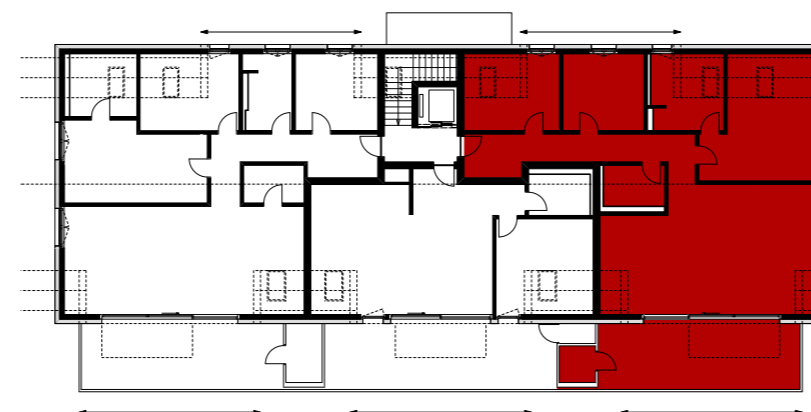
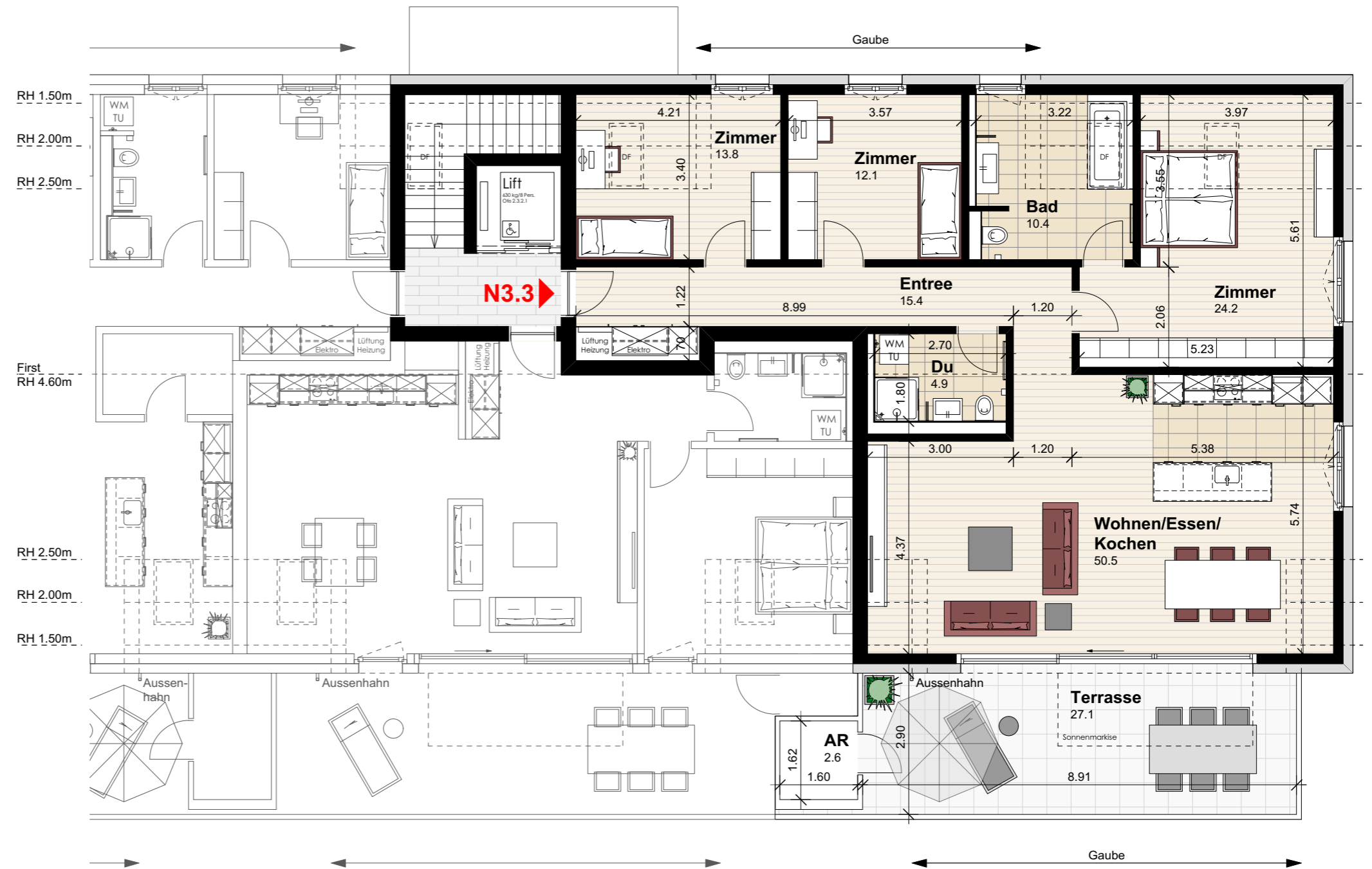
Anzahl Zimmer	4.5
Wohnfläche (brutto)*	138.50 m ²
Wohnfläche (netto)*	131.30 m ²
Aussenbereich	27.10 m ²
Keller	10.00 m ²

* gemessen ab Raumhöhe 1.50m

THOMA[®]
IMMOBILIEN TREUHAND

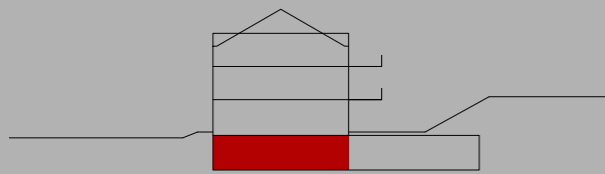
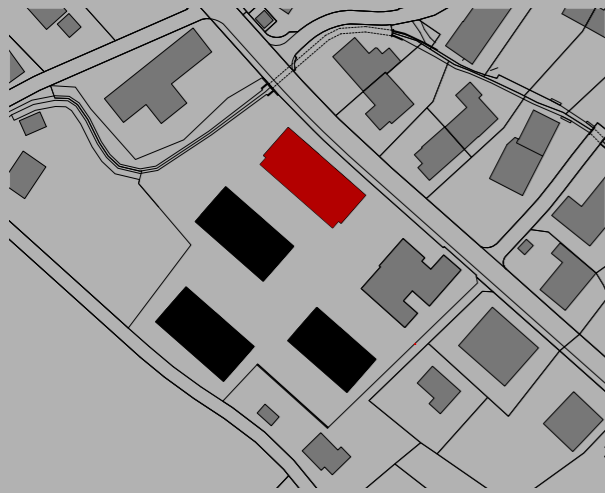
Beratung + Verkauf
THOMA Immobilien Treuhand AG
Bahnhofstrasse 13A
8580 Amriswil
Tel. 071 414 50 60
infotg@thoma-immo.ch
www.thoma-immo.ch

20. April 2018



0 1 2 3 4 5m

Mst. 1:100 (1cm = 1m)



Wohnung N3.3 (Dachgeschoss)

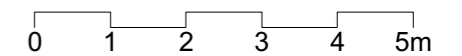
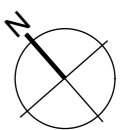
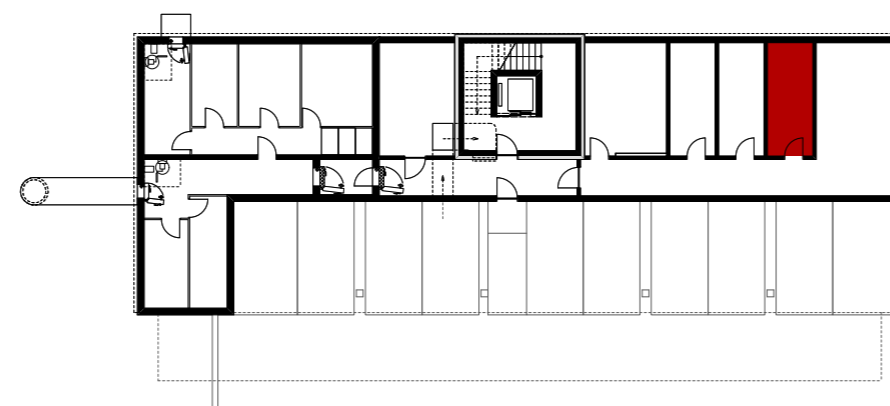
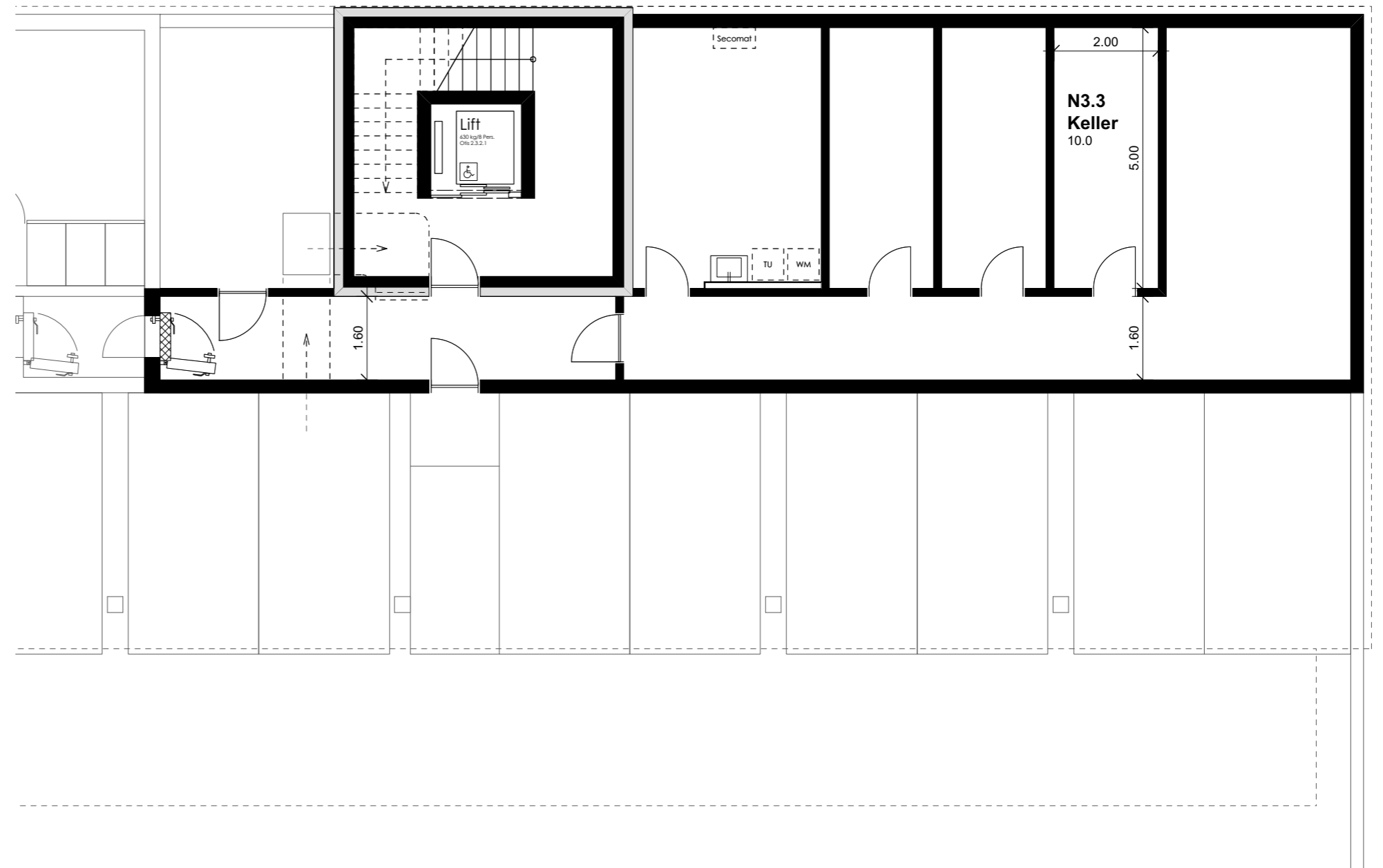
Anzahl Zimmer	4.5
Wohnfläche (brutto)*	138.50 m ²
Wohnfläche (netto)*	131.30 m ²
Aussenbereich	27.10 m ²
Keller	10.00 m ²

* gemessen ab Raumhöhe 1.50m

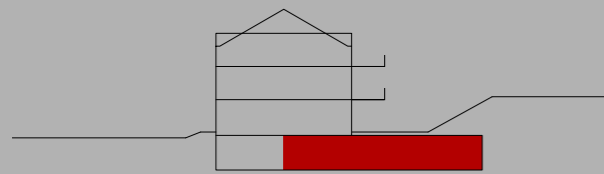
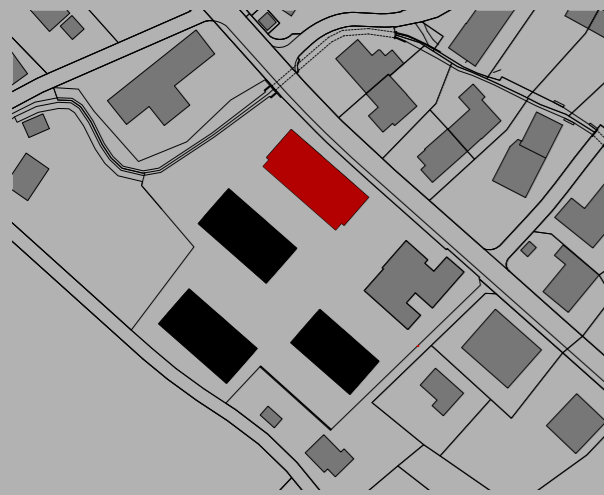
THOMA[®]
IMMOBILIEN TREUHAND

Beratung + Verkauf
THOMA Immobilien Treuhand AG
Bahnhofstrasse 13A
8580 Amriswil
Tel. 071 414 50 60
infotg@thoma-immo.ch
www.thoma-immo.ch

20. April 2018



Mst. 1:100 (1cm = 1m)



Wohnung N3.3 (Dachgeschoss)

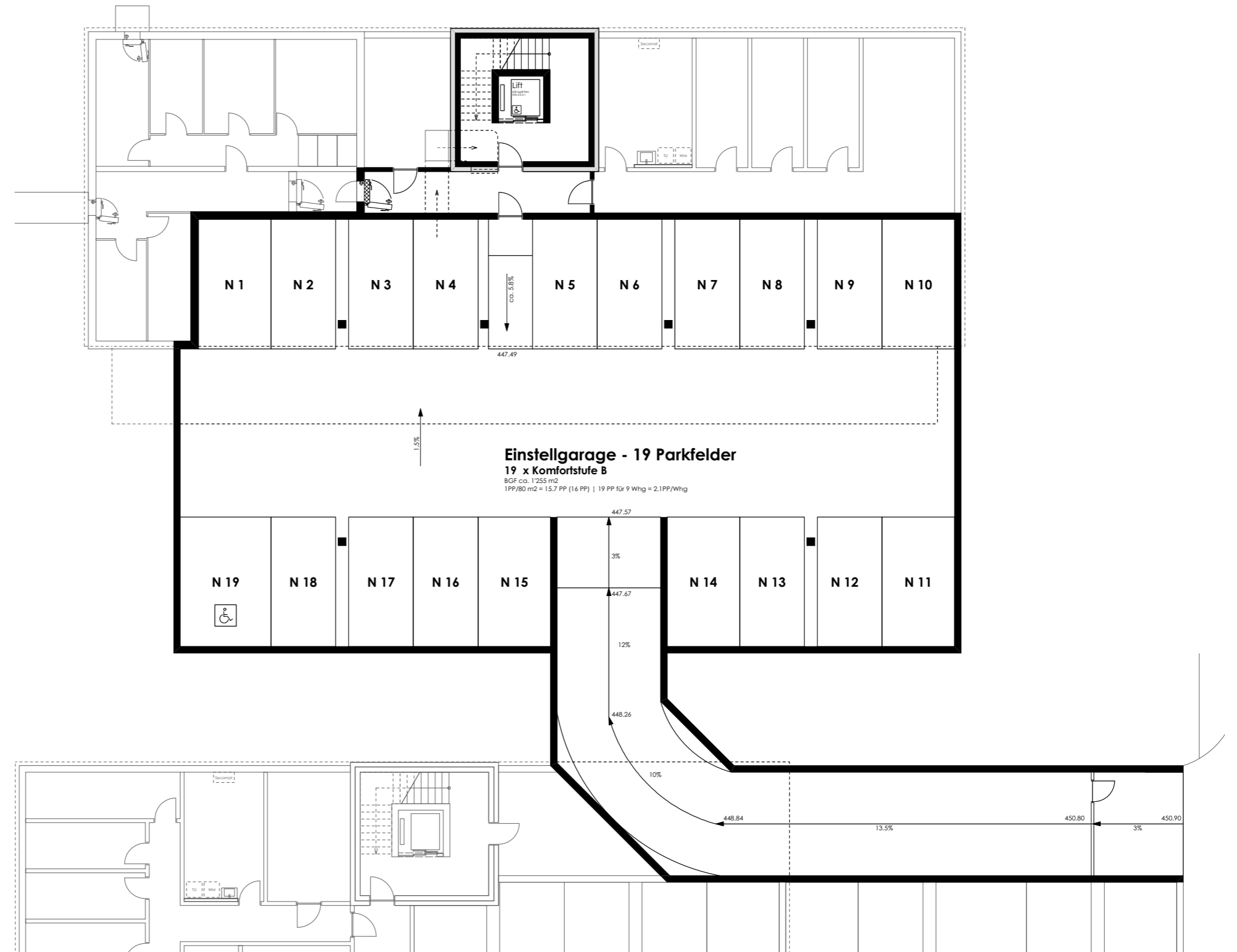
Anzahl Zimmer	4.5
Wohnfläche (brutto)*	138.50 m ²
Wohnfläche (netto)*	131.30 m ²
Aussenbereich	27.10 m ²
Keller	10.00 m ²

* gemessen ab Raumhöhe 1.50m

THOMA
IMMOBILIEN TREUHAND

Beratung + Verkauf
THOMA Immobilien Treuhand AG
Bahnhofstrasse 13A
8580 Amriswil
Tel. 071 414 50 60
infotg@thoma-immo.ch
www.thoma-immo.ch

20. April 2018



0 1 2 3 4 5m
Massstab unbestimmt